

**Kawasaki**  
**KCM**

125KW | 2.2 – 3.0 m<sup>3</sup>  
BUCKET CAPACITY

**70Z7**



**ONE FOCUS. COMPLETE SOLUTIONS.**



## INTRODUCING A NEW E.P.I.C. GENERATION

# 70Z7

### 70Z7

#### FEATURES:

- Fuel efficient CUMMINS engine
- Powerful
- Total redesign, stylish
- Comfortable cab
- Great visibility
- Easy read LCD display
- Smooth shifting
- Quiet

#### EFFICIENT. POWERFUL.

#### INTELLIGENT. COMFORTABLE.

Kawasaki pioneered the Z-Link design to provide unmatched utility, high breakout force and efficiency in its loaders. The Z7 generation implements brand-new patented technology, industry exclusive innovation, and input from owners and operators all over the world. We've engineered the Z7 series from the ground up!

#### ■ EFFICIENT

Quick Cycle functions and PowerTrain Efficiencies work together through the IntelliTech Operating System to improve operating efficiency and reduce operating costs.

#### ■ POWERFUL

Custom Operating Power Modes, made available through the IntelliTech Operating System, maximize a High Engine Power Rating to provide power on demand.

#### ■ INTELLIGENT

The Kawasaki IntelliTech Operating System uses logic and intelligence to adjust the operating characteristics of the loader. Our intuitive system captures every aspect of working conditions and operating demands to adjust the powertrain and hydraulics for best application requirements. All of the IntelliTech features are designed to maximize performance.

#### ■ COMFORTABLE

The new Z7 operator compartment features a low-profile dash, full-length glass doors, panoramic front window, well-organized storage areas—plus much more. We have total operator comfort in mind!

## DEFINING A NEW STANDARD

Kawasaki defines a new standard in production class wheel loaders with the introduction of the 70Z7—a model that reflects the advanced engineering required to improve operating efficiencies while lowering operating costs through a highly intuitive, patented technology, the IntelliTech System.

IntelliTech is a family of technological innovations by Kawasaki to enhance the performance of the Z7 loader series. It is a comprehensive package of features that affects all phases of the wheel loader application.

These features use logic or intelligence to adjust the operating characteristics of the machine, sensing the working conditions and adjusting the powertrain and hydraulics to best match application or environmental requirements. Many of the IntelliTech operations are automatic, while others allow the operator to select functions appropriate for the application or work environment.



The machine in the pictures may include optional items. Please consult your local Kawasaki dealer for the available items.



KCM provides a totally focused approach to supporting your business. From carefully designed programs and services, to engineered special applications options, the 70Z7 wheel loader is ready to tackle the most demanding applications and environments.



The machines in the pictures may include optional items. Please consult your local Kawasaki dealer for the available optional items.





## EFFICIENT.

Efficiency is getting the job done with the least amount of waste. The Z7s are very efficient loaders. The hydraulic system is designed for maximum performance and efficiency. The systems and controls allow for efficient operation. And servicing is efficient and reduces operating costs even further.

### EFFICIENT HYDRAULICS

- Industry Exclusive, open center system for better feel and response
- Fuel efficient, load sensing, piston pump hydraulics
- Excavator style system, proven performance
- Efficient, proven Z-linkage for excellent digging performance

### EFFICIENT OPERATION

- Down Shift Switch allows for quick downshifting to meet operating conditions
- Shift Hold Switch allows for holding in range to meet operating conditions
- AutoMode provides for Automatic 1st–5th, 2nd–5th or manual for optimal operation
- Normal and Power modes match the full range of demand
- Quick Power button allows for momentary high power demand

### EFFICIENT SERVICING

- Extended Lube Intervals from patented HN bushings—up to 500 hours
- Engine Oil Change Interval- 500 hours when using low ash, CJ-4 oil
- Accessible filters, ground level fueling, tank sight gauges, grouped grease fittings

## POWERFUL.

Power and productivity are what Kawasaki loaders are famous for. The Z7 has moved to another level in this area. Strong, responsive engines provide the power to get the job done. Powerful hydraulics make the work easy and the productivity high.

### POWERFUL ENGINE

- CUMMINS QSB6.7 Diesel with a big 125kW provides excellent power
- Tier 4i Certified, clean
- Reliable
- Fuel Efficient
- Responsive
- Adapted EGR technology reduces Nox and particulate matter.
- Engineered with no DPF, requires No Regeneration

### POWERFUL HYDRAULICS

- Reliable piston pump
- Excellent breakout force
- Fast, Responsive
- Increased Steering Power



The machines in the pictures may include optional items.  
Please consult your local Kawasaki dealer for the available optional items.



The machines in the pictures may include optional items.  
Please consult your local Kawasaki dealer for the available optional items.



# INTELLIGENT.



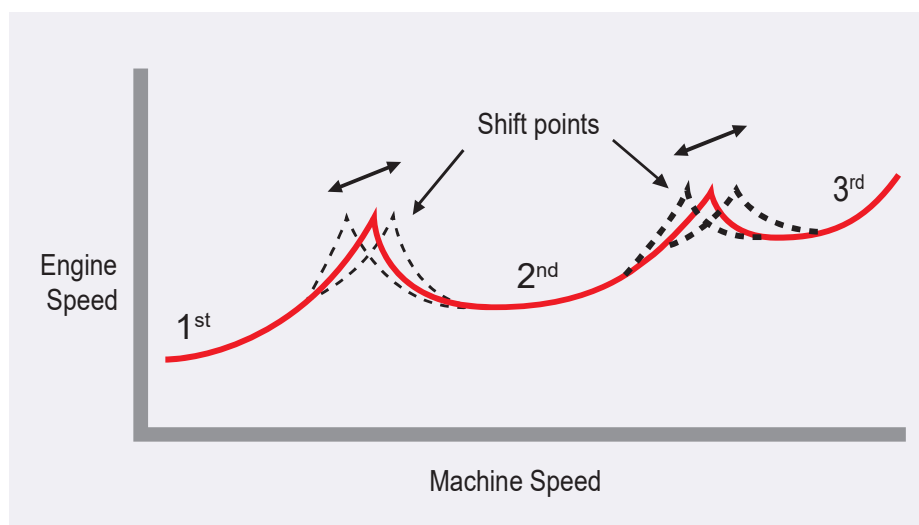
The machines in the pictures may include optional items. Please consult your local Kawasaki dealer for the available optional items.



Intelligence in a wheel loader means systems that adjust to the working conditions to improve efficiency and productivity. The Kawasaki IntelliTech system is a family of features that optimize the performance of the machine in any working condition.

## INTELLITECH SYSTEM

- Patented IntelliDig system balances Rimpull force and Hydraulic digging force to match conditions
- QuickCycle system speeds V-loading cycles
- FlexShift varies the shift points of the transmission to match working conditions



# INTELLIGENT.



## INTELLITECH SYSTEM

- Efficient Acceleration prevents wasted energy from over-accelerating and provides added power for fast acceleration
- Shockless Declutch provides smooth declutch function for level or slope operations
- Automatic Reversible Cooling Fan is controlled by multiple inputs for optimum operation
- Aerodynamic Fan blade design for quiet operation



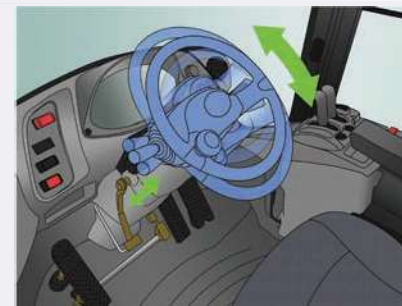


## COMFORTABLE.

A comfortable operator is a productive operator. In the Kawasaki Z7s the operator comfort is outstanding. Quiet, convenient, clean, and designed for optimum operator comfort, safety, and productivity.

### COMFORTABLE CAB

- Large, quiet, well-sealed ROPS cab with great visibility in all directions
- Deluxe, ergonomic mechanical suspension seat can be equipped
- Tilt/Telescoping steering column with pop-up pedal for convenient entry and exit
- High Visibility front dash design
- Excellent ventilation from sliding side windows and full-length glass, latch-back doors
- Adjustable side console to fit operator preference
- Standard AM/FM with AUX input and dual speakers
- Thermostatically controlled HVAC system for year-round climate control
- Convenient storage includes thermal storage box, cup holders, coat hook and large storage shelf
- Rearview Camera (Optional)



## COMFORTABLE.

Improved Controllability. The Z7 operator compartment features a low profile dash with monochrome LCD monitor, full-length glass doors, panoramic front window, well organized storage areas, plus much more. We have total operator comfort in mind!

### CONVENIENT CONTROLS

- The monochrome LCD monitor provides information and alerts
- Fingertip, Pilot-assisted hydraulic controls can be single or dual lever
- The Pilot controls, available in single or dual lever, also contain fingertip controls for the DSS (Downshift Switch), Quick Power Button, and Horn.
- An alternate Shift Hold Button is conveniently located in the hydraulic control console, along with the elevated optional forward/reverse switch.
- The adjustable arm console contains rocker switches for convenient selection of the "Power Mode," "Automode 1 & 2," "Variable Declutch," "Control Lever Lock" and optional "Ride Control."
- 24V cigarette lighter, dual interior lights





# SERVICE SIMPLIFIED

### EASY ACCESS

- Angled Ladders
- Wide-Access Engine Compartment Doors
- Easy Access Battery Box
- Grouped Lube Points
- Ground-Level Fluid Check Points
- Ground-Level Fueling
- Fuse/Relay Panel in Cab

### EXTENDED SERVICE INTERVALS


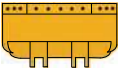
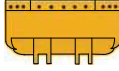
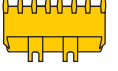
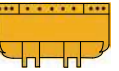
- HN Bushings impregnated with high viscosity oil extend lubrication period to 500 hours on loader linkage pins
- Automatic Reversible Cooling Fan, standard



The machines in the pictures may include optional items.  
Please consult your local Kawasaki dealer for the available optional items.

# BUCKET DATA

7027

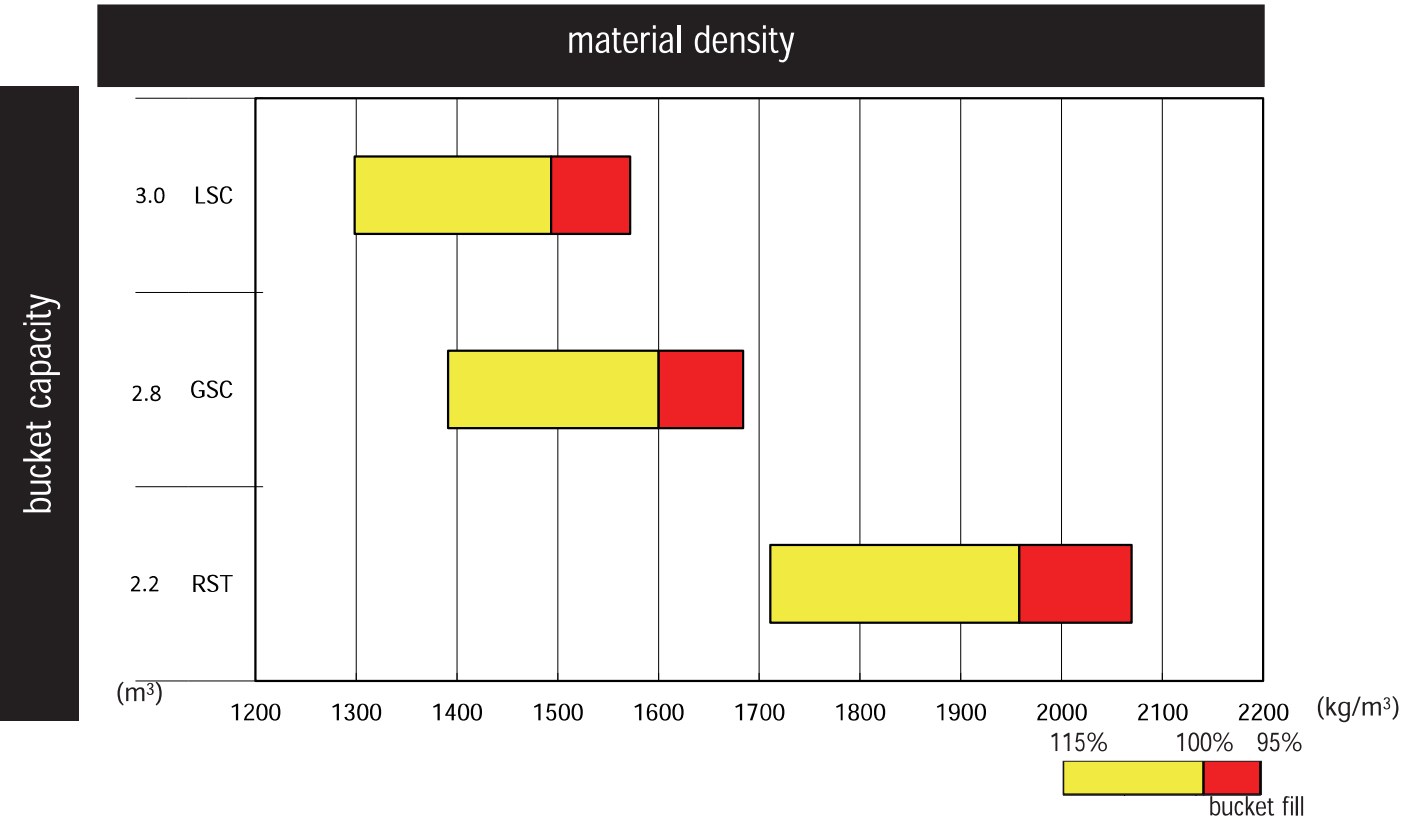
			Standard Arm			Highlift
			"General purpose (Loose material)"	"General purpose (Stock pile)"	Rock straight-edge	"General purpose (Stock pile)"
			Bolt-on edges	Bolt-on edges	Teeth	Bolt-on edges
			LSC	GSC	RST	GSC
Bucket capacity	heaped	m³				
	struck	m³				
Max. dumping clearance		mm	2,760	2,790	2,770	3,290
Max. dumping reach		mm	1,100	1,070	1,070	1,130
Max. hinge pin height		mm	3,920			4,320
Digging depth (with bucket level)		mm	100			170
Breakout force		kN	120	125	152	128
Bucket tilt-back angle at carry position		deg	50			
Overall length		mm	7,810	7,760	7,790	8,220
Overall height	up to cab top	mm	3,280			
	bucket full raise	mm	5,340	5,290	5,230	5,580
Overall width	outside tire	mm	2,610			
	outside bucket	mm	2,690			
Tread		mm	2,050			
Wheel base		mm	3,100			
Min. turning radius (bucket carry position)	at outside bucket	mm	6,200	6,190	6,190	6,360
	at center of outside tire	mm	5,300			
Min. ground clearance		mm	395			
Full articulation angle		deg	40			
Operating weight	with ROPS CAB	kg	14,180	14,140	14,570	14,560
Static tipping load	straight	kg	11,460	11,510	11,200	9,730
	Full turn(37°)	kg	9,870	9,920	9,600	8,360

The weight and load figure includes standard counterweight, enclosed ROPS Cab, air conditioner, 20.5-25-12PR (L-3) tires, full fuel tank and operator. (75kg)

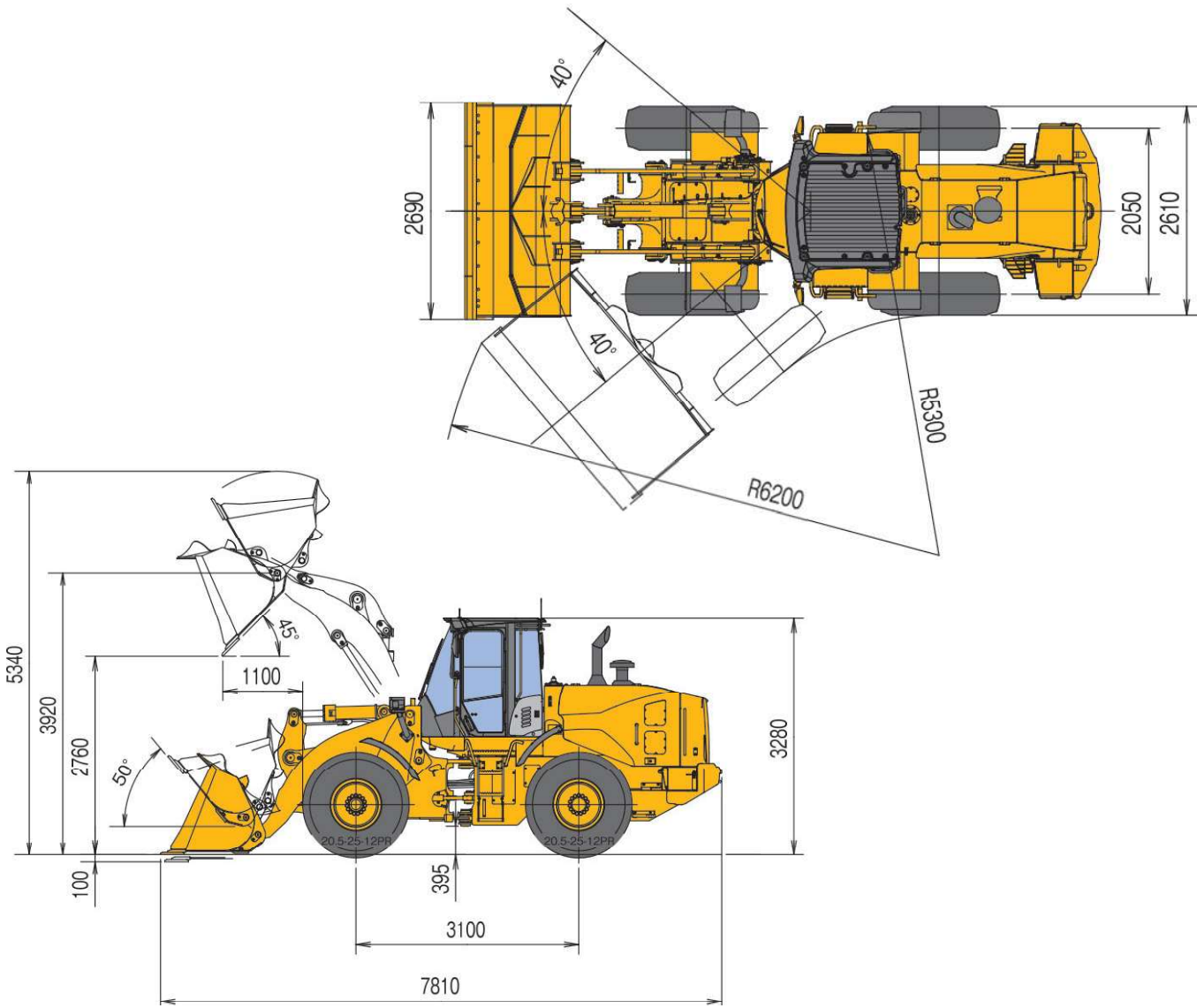


WEIGHTS AND DIMENSIONS								
Optional item		Operating Weight	Tipping Load			Overall Width (Outside Tire)	Overall Height	Overall Length
			Straight	Full Turn				
Tires: 20.5-25-12PR (L-3)	kg	±0	±0	±0	mm	±0	±0	±0
Tires: 20.5R25 (L-3)	kg	+190	+140	+120	mm	±0	+5	±0
Tires: 20.5R25 (L-5)	kg	+490	+390	+340	mm	+25	+40	-35
Belly guard	kg	+160	+110	+100	mm	±0	±0	±0

BUCKET SELECTION CHART



DIMENSIONS



Equipped with LSC bucket, 20.5-25-12PR(L3) tubeless tire and ROPS cab.

Remarks

- \* Materials and specifications are subject to change without any obligation on the part of the manufacturer.
- \* This information, while belived to be completely reliable, is not to be takes as warranty for which we assume legal responsibility.
- \* Dumping clearance and reach are measured from bucket edge in accordance with SAE J732C.
- \* Color for model shown in this brochure is a standard Kawasaki yellow.
- \* This specification sheet may contains attachments and optional equipment which are not available in your area. Please contact your local Kawasaki dealer for those items which you require.

OPERATING SPECIFICATIONS



ENGINE <small>(EPA Tier 4 Interim/EU Stage IIIB Certified)</small>	
Net Power (SAE J1349) ISO 9249	125 kW/2200 RPM
Make/Model	CUMMINS QSB6.7 diesel engine
Type	4-cycle, water-cooled, direct injection with turbocharger and air cooled intercooler
Fuel Type	#2 Diesel (Requires ultra-low sulfur fuel.) ※1
Fuel Injection Pump	Electronically controlled, common rail type
Governor	All speed electrical type
Cooling Module Type	Hydraulic-driven, suction-type fan, pressurized radiator
Number of cylinders	6
Bore and stroke	107mm x 124mm
Total displacement	6.69 liters
Alternator	AC 24V–1.6 kW (65A)
Air Cleaner	Dry type (double element)
Starter Motor	DC 24V–7.8 kW (10.5 HP)
Battery	12V–140AH, (195G51) 2 units

TORQUE CONVERTER AND TRANSMISSION		
Torque converter	3-element, single-stage, 1-phase	
Transmission	Countershaft type, Full power shift	
	Nomal mode	Power mode
Speeds: Forward	1st: 5.9 km/hr 2nd: 11.5 km/hr 3rd: 17.4 km/hr 4th: 25.3 km/hr 5th: 38.5 km/hr	1st: 6.3 km/hr 2nd: 12.2 km/hr 3rd: 18.5 km/hr 4th: 27.0 km/hr 5th: 38.5 km/hr
Speeds: Reverse	1st: 6.2 km/hr 2nd: 12.1 km/hr 3rd: 26.5 km/hr 4th: - km/hr 5th: - km/hr	1st: 6.6 km/hr 2nd: 12.9 km/hr 3rd: 28.3 km/hr 4th: - km/hr 5th: - km/hr

SYSTEMS REFILL CAPACITY	
Fuel tank (diesel fuel)	235 L
Engine lubricant (including oil pan)	25 L
Engine coolant	28 L
T/M & T/C	21 L
Axle (front/rear)	31/34 L
Hydraulic oil tank	100 L
Hydraulic system (including hydraulic tank)	150 L

※1 Use Kawasaki recommended fuel to prevent engine from damage. Consult your local Kawasaki dealer about Kawasaki recommended fuel.

※2 Measured in accordance with SAE J732C

EQUIPMENT DATA



STANDARD EQUIPMENT

Engine	
Air cleaner, double element	VGT (Variable Geometry Turbocharger)
Cold Start (Intake Air Heater)	Work mode selector
Cooling Fan, Automatic Reversible	
EGR System	
Fuel filter, w/water separator	
Fuel Pre-Filter, w/water separator	
CUMMINS QSB6.7 diesel engine	
Powertrain	
Brakes, Service	Drive shafts, Low maintenance
Enclosed Wet Disc	F-R direction selector (Column mounted)
Dual System	Quick Power Switch
Inboard Mounted	Transmission, Automatic w/load sensing system.
Brake, Parking	Transmission declutch (3-position L/H/Off)
Spring Applied	Transmission mode selection (3-position AUTO1/MAN/AUTO2)
Oil Pressure Released	Universal Joints, Sealed
Wet Disc Type	
Torque Proportioning Differential (F/R)	
Down-Shift Switch	

Hydraulic System

Boom Kick-Out	Pump, Variable Displacement, Load-sensing
Bucket Positioner	Steering, Pilot
Control Lever, Dual, Pilot-assisted	System; Open-Center, High-Pressure, Load-Sensing
Control lever lock (Electric)	Valve, Anti-Drift
Control Valve, 2-spool	

Electrical

24-volt electrical system	Lights:
Back-up alarm	2 Headlights (Halogen)
Batteries (2), 12V	2 Front Working Lights (Halogen)
Horn, Dual Electric	2 Stop/Tail/Backup (Bulb)
Instrument Panel, Monochrome	Turn signal w/4-way flashers/Marker

OPTIONAL EQUIPMENT

Accessory Outlet, 12V/ 5 Amp	High Lift Boom Arm
Battery Disconnect Switch	Hydraulic System, 3 Spool Valve
Belly Guard, Transmission	Large capacity alternator
Bucket cylinder guard	Lifting eyes
Buttery cut off switch	LSD (Limited Slip Differential)
Emergency Steering	Owner's Site Plus
Fenders, Front & Rear w/mudflap	Pre-cleaner (bowl / turbine type)

Cab

ROPS Cab: Enclosed cab with sound suppression, front & rear wipers and washers, two rear view and side mirrors, tinted glass, full view latch-back doors, sliding side windows	Cup Holder (2)
Adjustable Armrest/Console, (fore/aft sliding)	Floormat, Sweep-out
Air Conditioner/Heater/Pressurizer	Retractable seat belt
AM/FM radio with AUX input	ROPS/FOPS Certified
Ashtray	Seat, Mechanical Suspension, fabric
Cab Dome Lamps (2)	Steering Column, Telescoping and Tilting w/quick-release pedal
Cigarette Lighter, 24V	Storage Box (Heated/Cooled)
Coat Hook	Storage Tray
	Sun Visor

Alarms, Gauges and Indicators

Alarms (Visual & Audible)	Indicators
Air cleaner element	Cold Start
Axle oil temperature	Control lever lock
Battery discharge warning	ECO-Operating Status
Brake oil low pressure	Fan reverse rotation
Engine oil low pressure	F-R shift status
Engine warning	High beam
Fuel filter (Water in fuel)	Maintenance lamp
Hydraulic oil level	Parking brake
Hydraulic oil temperature	Power mode
Overheat (Engine coolant)	Seat belt
Transmission warning	Shift hold
Gauges	Time/Operating hour/ODO
Engine coolant temperature	Transmission mode and status
Fuel gauge	Turn signal w/4-way flashers/Marker
Speedometer	Work light
Transmission oil temperature	

Others

Articulation locking bar	Linkage Pins, HN Bushing
Counterweight	Neutral Safety Start
Drawbar	Rear Grill, hinged
Wear Edge	Steps, rear
Ladders, Inclined	Z-bar loader linkage

Quick Coupler	Seat, Mechanical Suspension, fabric w/headrest
Ride Control, Automatic	Single Lever Hydraulic Control w/multifuction Grip
Rear full fender	Vandalism protection
Rearview Camera	Wide Fin Pitch Radiator
Rear working lights for cab (Halogen)	
Seat, Air Suspension, fabric w/headrest	



# ONE FOCUS. COMPLETE SOLUTIONS.

## THE KAWASAKI DIFFERENCE

It's the Kawasaki difference customers across all over the world look to—power, performance, reliability and a rich history of providing innovative solutions. Through its long-term commitment to maintaining a leadership position in technology, service and support, dedicated focus on a single product line and unsurpassed track record, Kawasaki continues to deliver. This means real benefits to your business: efficiency, increased production, reduced operating costs, comfort and across-the-board quality support.

- Dedicated Focus on Producing Wheel Loaders Since 1962
- Engineered Specialty Applications Packages
- Extensive Training at the KCM Corporation Training Center
- Flexible Warranty Programs
- Parts Shipments
- Carefully Designed Programs and Services
- Solid Partnerships with Knowledgeable and Experienced Dealers.

## HISTORY

KCM's parent company, Kawasaki Heavy Industries, has been a global leader for more than 100 years at providing comprehensive solutions and quality, top-performing products. From aerospace to infrastructure to construction equipment, Kawasaki Heavy Industries sets the standard—all the while raising the bar.

## FOCUS

Thanks to Kawasaki's total focus on articulated wheel loaders, your Kawasaki wheel loader is ready to tackle the most demanding applications and environments.

## INNOVATION

Working with end users across the globe, KCM engineers stay up to speed on reviewing wheel loader needs. The result: Kawasaki leads the way in responding to new industry demands with complete solutions, engineering and manufacturing Kawasaki wheel loaders that are up to the task—and your expectations.



**KCM**  
**KCM Corporation**

<http://www.khi.co.jp/kenki/english/>