

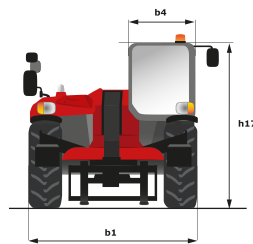
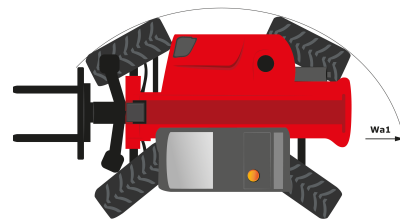
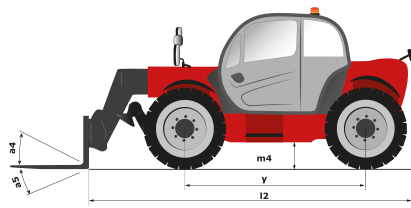
Technical sheet

# ***MT-X 1030 ST***

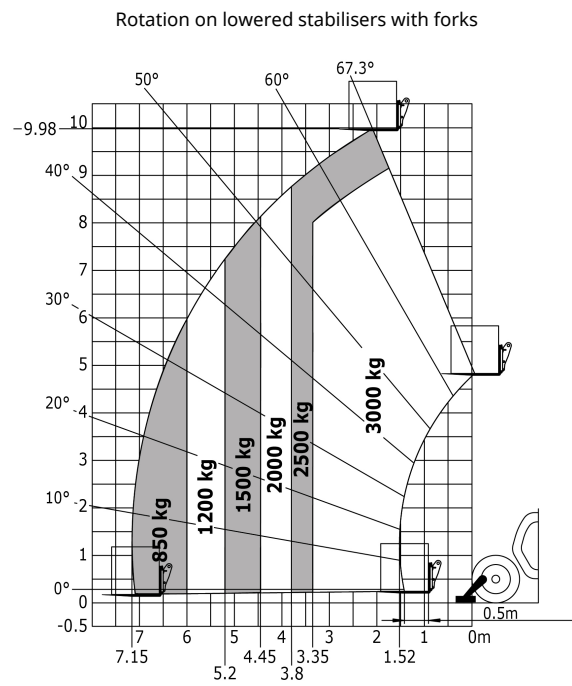
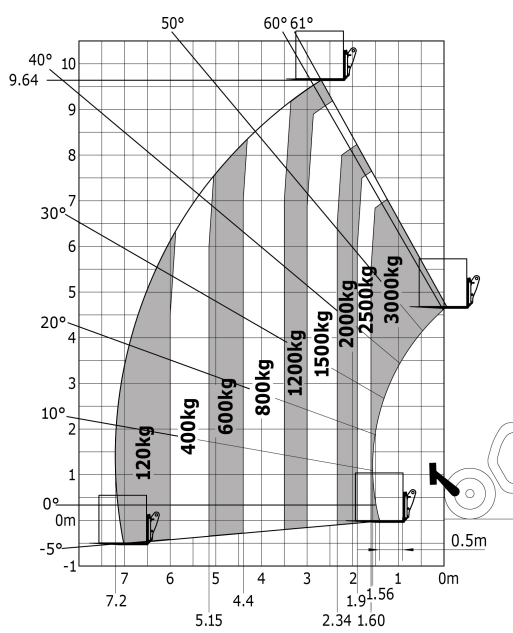
Telehandlers

---

Capacities	Metric	Imperial
Max. capacity	3000 kg	9842.52 lbs
Max. lift height	9.98 m	29 ft 6 in
Max. reach	7.15 m	23 ft 5 in
Bucket breakout force	5330 daN	11982.31 lbf
Weight and dimensions		
l2 - Overall length of fork carriage	4.99 m	16 ft 4 in
b1 - Overall width	2.34 m	6 ft 7 in
h17 - Overall height	2.30 m	6 ft 7 in
y - Wheelbase	2.69 m	8 ft 10 in
m4 - Ground clearance	0.45 m	1 ft 6 in
b4 - Overall cab width	0.89 m	2 ft 11 in
Wa1 - Frame outer turning radius	3.75 m	12 ft
Unladen weight (with forks)	7720 kg	17019 lbs
Standard tyres	Pneumatic	Pneumatic
Standard forks	1200x125x45	3.93x0.41x0.14
Performances		
Lifting	6.70 s	6.70 s
Lowering	5.40 s	5.40 s
Telescope extension	13.60 s	13.60 s
Retracting the telescope	8.70 s	8.70 s
Scoop	2.70 s	2.70 s
Dump	2.30 s	2.30 s
Engine		
Brand	Perkins	Perkins
Environmental standards	Stage 3A	Stage 3A
Model	TD 3.6 L	TD 3.6 L
Number of cylinders - Capacity	- - 3621 cm <sup>3</sup>	- - 220.96 in <sup>3</sup>
Power	100 hp / 74.50 kW	100 hp / 74.50 kW
Max. torque	330 Nm at -	243.39 ft.lbs at -
Laden drawbar pull	8160 daN	18344.41 lbf
Transmission		
Type	Torque Converter	Torque Converter
Number of gears (forward/reverse)	4/4	4/4
Parking brake	Oil-Immersed Multi-Discs on Front Axle	Oil-Immersed Multi-Discs on Front Axle
Service brake	Oil-Immersed Multi-Discs on Front & Rear Axles	Oil-Immersed Multi-Discs on Front & Rear Axles
Hydraulics		
Type of pump	Gear pump	Gear pump
Hydraulic flow rate - Pressure	104 l/min - 250 bar	27.47 gpm - 3409.85 psi
Tank capacities		
Engine oil	128 l	33.81 US gal.
Hydraulic oil	128 l	33.81 US gal.
Fuel	120 l	33 US gal.
Noise & vibration		
Noise at driving position (LpA)	78 dB(A)	78 dB(A)
Noise to environment (LwA)	104 dB(A)	104 dB(A)
Vibration on hands/arms	<2.5 m/s <sup>2</sup>	<8.2 ft/s <sup>2</sup>
Miscellaneous		
Steering wheels / Driving wheels	4 / 4	4 / 4
Safety	Standard EN 15000 Cab ROPS - FOPS Level 2	Standard EN 15000 Cab ROPS - FOPS Level 2
Controls	LPS	LPS



Load chart





Siège Social  
430 rue de l'Aubinière - 44150 Ancenis Cedex - France  
Tel: +33(0)2 40 09 10 11 - Fax: +33 (0)2 40 09 10 97  
[www.manitou.com](http://www.manitou.com)



This brochure describes versions and configuration options for Manitou products which may be fitted with different equipment. The equipment described in this brochure may be standard, optional or not available depending on version. Manitou reserves the right to change the specifications shown and described at any time and without prior warning. The manufacturer is not liable for the specifications given. For more information, contact your Manitou dealer. Non-contractual document. Product descriptions may differ from actual products. List of specifications is not comprehensive. The logos and visual identity of the company are the property of Manitou and may not be used without authorisation. All rights reserved. The photos and diagrams contained in this brochure are provided for information only.

MANITOU BF SA - Limited company with board of directors - Share capital: 39,547,824 euros - 857 802 508 RCS Nantes