



## SUPPORTING DEFENCE PROJECTS IN W.A. AVIATION HANGAR UPGRADE AT RAAF PEARCE BASE

### PROJECT OVERVIEW

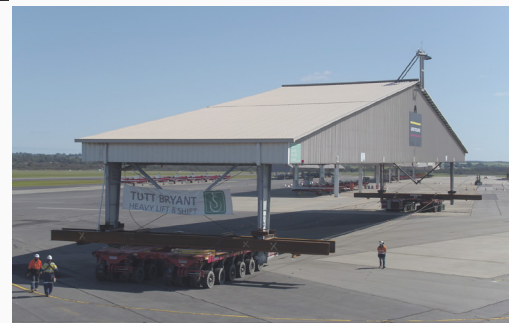
The Challenges presented to Tutt Bryant from the Engineering Project Company, Laing O'Rourke, was to;

- 01** Provide a solution, to relocate 5x circa 60 year old, 70 mtr long, 13mtr high, flight line shelters, considering potential degenerative structural issues, without the use of a crane, from their current airside location, to a demolition area, 800mtr away, with minimal airside operations, within a 36 hour window.
- 02** Provide a solution to, elevate and deliver, 10x new shelters, 30 mtr long, 17mtr wide, from a 2.5 mtr (underside) fabrication height to an installation/travel height (underside) of 6mtrs, to the airside location of the removed, previously existing, shelters.

After consultation between the client and Tutt Bryant, an efficient and cost effective method had been reached.

From its conception 9 months earlier, after a lot of fine tuning and development, with an experienced Engineering and Project Management team, the solution was to utilise 24 axle lines, in various configurations, in conjunction with custom, in house, engineered transport frames, and one of Tutt Bryant's 1100t Gantry systems.

The project ran ahead of its weekly schedule allowing for other contractors to expedite their scope of works, leading to an overall achievement of finishing the project 2 weeks earlier than the original contract.







## 01

### Scope

To remove 5x 60 year old, 70 mtr long x 16m wide x 12mtr high shelters from a live airfield and replace with 10x newly designed shelters which require lifting to 6 m high from their construction location at 2.5 mtrs high, with minimal operational impact, Airside. Securing for high speed wind and cyclone conditions.

## 02

### Solution

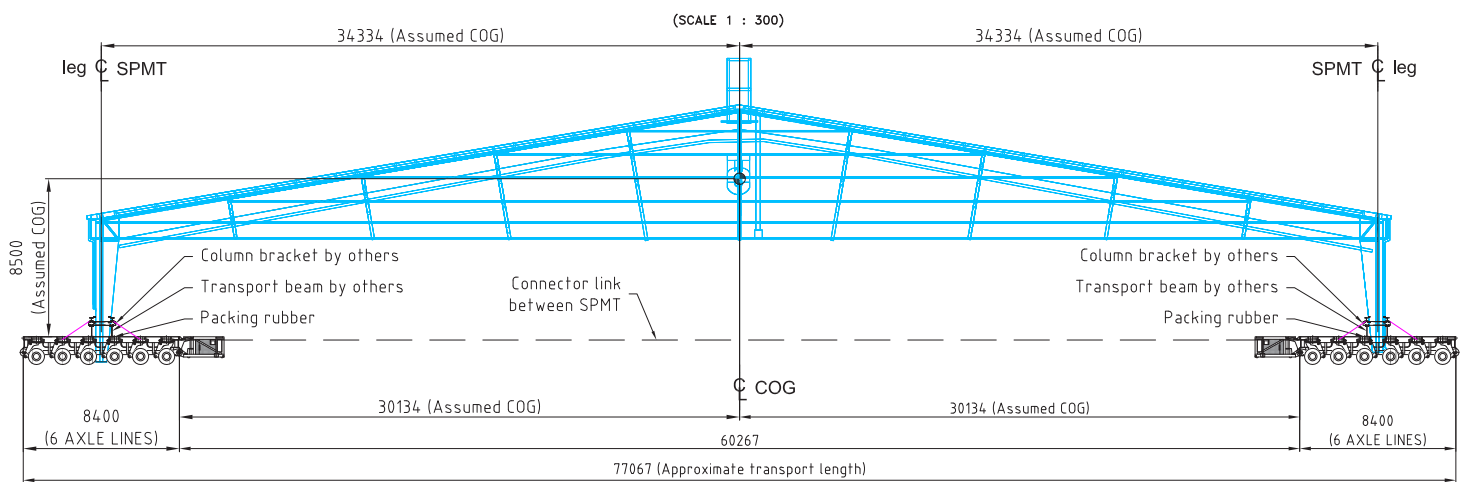
To provide a transport, lifting, design and process, Managed and Engineered plan, to accommodate simultaneous operations, with narrow windows of opportunity.

## 03

### Conclusion

9 months of consultation and workshopping with the client and other 3rd parties, to come together, completing the project 2 weeks ahead of schedule.

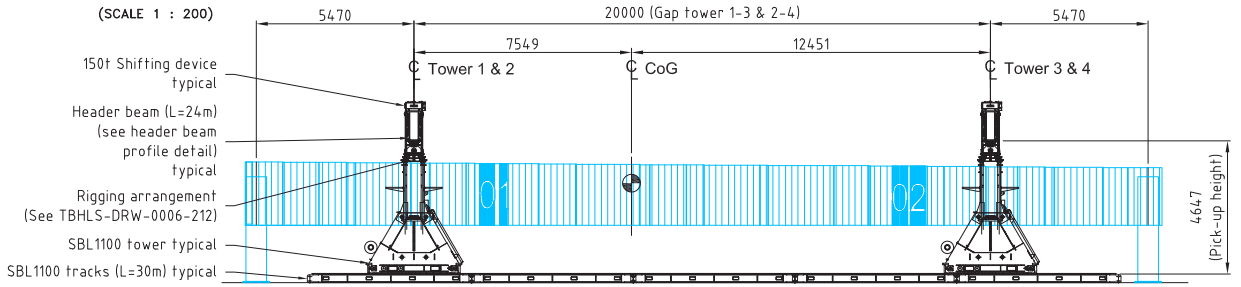
## OLD SHELTER - SPMT TRANSPORT ARRANGEMENT



# NEW SHELTER - HYDRAULIC GANTRY SYSTEM OPERATION

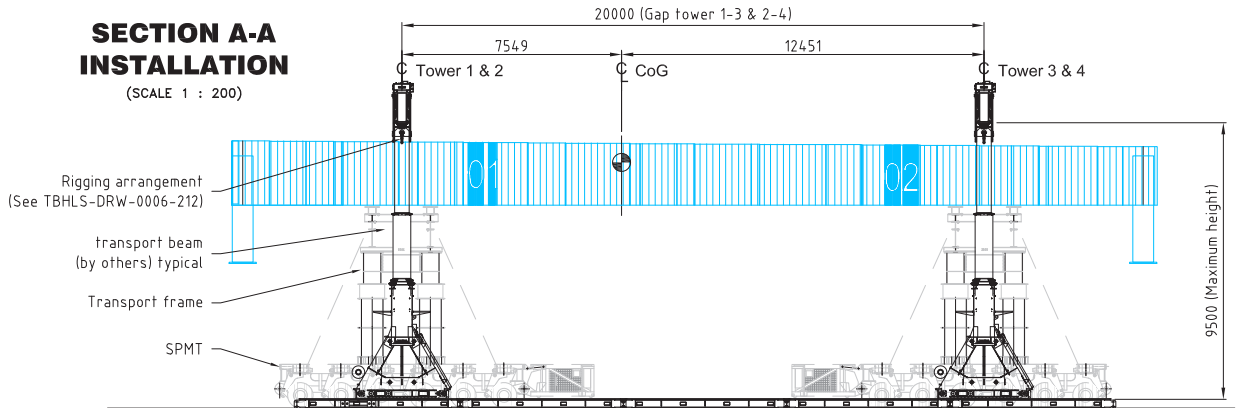
## SECTION A.A PICK UP

### SECTION A-A PICK-UP



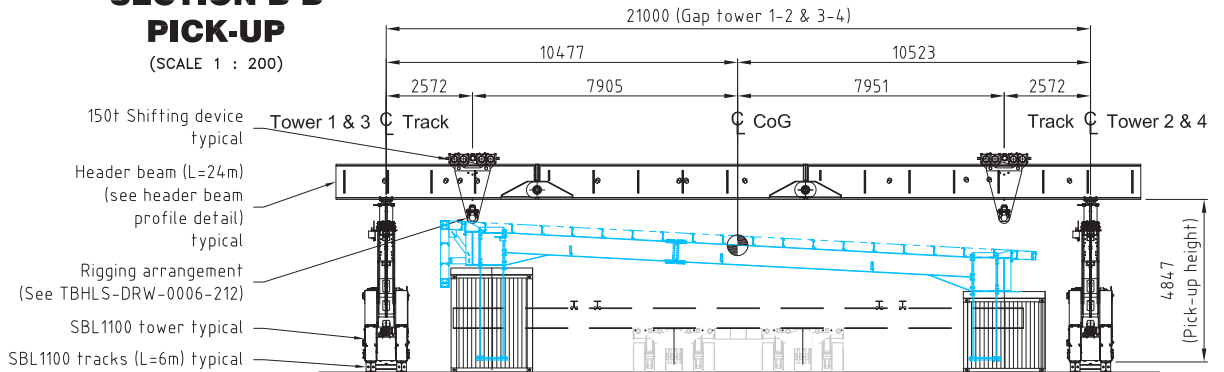
## SECTION A.A INSTALLATION

### SECTION A-A INSTALLATION



## SECTION B.B PICK UP

### SECTION B-B PICK-UP



## SECTION B.B INSTALLATION

### SECTION B-B INSTALLATION

