



AUSTRALIAN MARINE COMPLEX

RELOCATION OF CBH GROUP SHIPLOADER SL2 FOR DECOMMISSIONING

PROJECT PHASES

01

Scope

To produce a transportation and relocation design for the decommissioning of Shiploader SL2 owned by CBH Group.

02

Solution

Specific guidelines as to where the Shiploader needed to be received. With minimum time to prepare and execute the transport and relocation.

03

Conclusion

Utilize the lifting beam of the discharging ship as a main transport beam. Designed packing and support arrangements.

PROCESS INNOVATION THROUGH THE DECADES

Successfully undertaking and completing another project in WA within a strict timeframe, Tutt Bryant Heavy Lift & Shift successfully completed the transportation and relocation of Shiploader SL2, under contract to Delta Group.

Weighing approximately 750 tonnes with a centre of gravity approximately 20 metres from the group, TBHL&S successfully used a Scheuerle third generation Self-Propelled Modular Transporter (SPMT) to satisfy the requirements of the CBH engineers.

Utilising the lifting beam of the discharging ship, TBHL&S used the main

transport beam to receive the main member of the Shiploader.

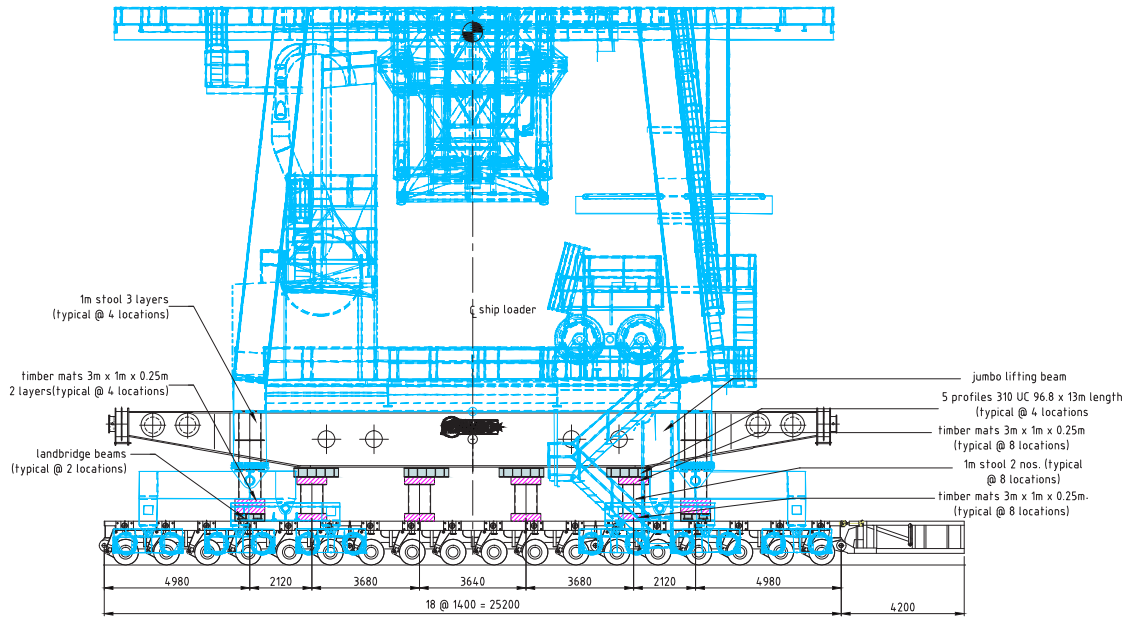
A specially designed packing and support arrangement provided an even spread of the weight of the shiploader when transported onto the trailers. Utilising 8 file 18 axle lines SPMT or a total of 72 axle lines to transport and relocate Shiploader SL2.

Shiploader SL2 was transported and relocated safely as per plan and schedule onto the offloading area for decommissioning.



TRANSPORT ARRANGEMENT OF SHIPLOADER SL2

ELEVATION VIEW



SECTION VIEW

