

**GROVE GMK6300L**  
ALL TERRAIN CRANE



**AVAILABLE FOR DRY OR WET HIRE**

---

## ABOUT US

---

Tutt Bryant Heavy Lift & Shift is one of the major crane hire, heavy haulage and specialised transport providers in Australia. Operating one of the largest crawler crane fleets in the region supported by other lifting and haulage assets, they have key operation centres in Brisbane, Perth, Sydney, Melbourne, Darwin, Karratha and in NSW's Hunter region.

In addition to their extensive crane fleet, Tutt Bryant Heavy Lift & Shift also runs an extensive fleet of modern, high capacity and sophisticated haulage platforms, jacking, skidding, skating equipment and alternative lifting systems. These assets provide Tutt Bryant Heavy Lift & Shift with the capability to provide nationwide heavy haulage and specialised transport services.

From its inception, Tutt Bryant Heavy Lift & Shift has supported a wide variety of organisations, both private and public in major works across all industries. Activities supported by the division include mining and extraction of natural resources, refineries, marine works, water supply, roads, rail, power, commercial, infrastructure and ports.

Operating through an integrated network of operations across Australia, Tutt Bryant Heavy Lift & Shift's geographical spread enables them to be a truly national provider of cranes, heavy lifting and transportation services.

---

## BENGALLA DRY CREEK, NSW

Grove GMK6300L and supporting cranes  
Pipeline installation.

## THE GMK6300L: CLASS LEADING

The Grove GMK6300L All-Terrain crane offers some of the strongest lifting abilities of any six-axle all-terrain crane. It provides exceptional power when lifting at tall heights and the seven-section main boom is designed for strong lifts without the need to rig the jib. A choice of five outrigger positions, more than any other crane in its capacity class, offers ultimate flexibility.

On the move, the GMK6300L is a smooth runner with its fully automatic transmission with torque converter. The Allison transmission is a strong and reliable performer in the toughest of conditions. It features an electronic control system that allows it to adapt to the changing environment and provide selfdiagnostics for easier maintenance. When combined with the patented Megatrak independent suspension system, the GMK6300L has optimum travel both on- and off-road.

As with its predecessors, the GMK6300L features a new carrier cab, a design introduction that first started with the latest generation of four-axle and five-axle cranes. With the step up in size to the GMK6300L, the cab has been adjusted to a wider design to accommodate the larger chassis on the six-axle machine. The spacious layout of the cab means it can comfortably seat three crew members, while its ergonomic layout of instruments and controls makes traveling swift and easy.



## KEY FEATURES



### LONGEST BOOM IN THE CLASS

The most talked about aspect of the GMK6300L is the 80 m main boom as it's the longest boom in its class and a clear advantage for owners. When the boom is extended to its maximum, it is capable of lifts up to 12 t; while at an extension of 74.8 m capacity still remains at 14.3 t. The seven-section Twin-Lock boom has Grove's patented Megaform shaping for greater rigidity. For further reach, a 37 m jib is available, meaning the maximum available length is 117 m; the crane can still lift 2t at this height. For those wanting even greater capacity from the boom extension, a heavy-duty jib is available that lifts up to 38t.



### MEGATRAK SUSPENSION

The MEGATRAK™ suspension system is the best off road driveline available on the market today. The system's versatility and performance allows the GMK6300L to operate as a true all-terrain crane. The MEGATRAK™ independent suspension and all-wheel steer system allows wheels to remain on the ground at all times so stresses and weight are not continually transferred between axles. MEGATRAK™ provides true ground clearance where others just raise the chassis.

### CRANE ASSET MANAGEMENT

#### ECOS

Electronic Crane Operating System - ECOS enables control of the entire crane's principle operations. Simple programming eases lift planning and a supply of essential information allows full concentration on the lift itself.

#### EKS 5

The EKS 5 monitors the lifting conditions of the crane at all times and provides a full graphic display, rear lighting, graphic of boom telescoping percentage, and load charts.

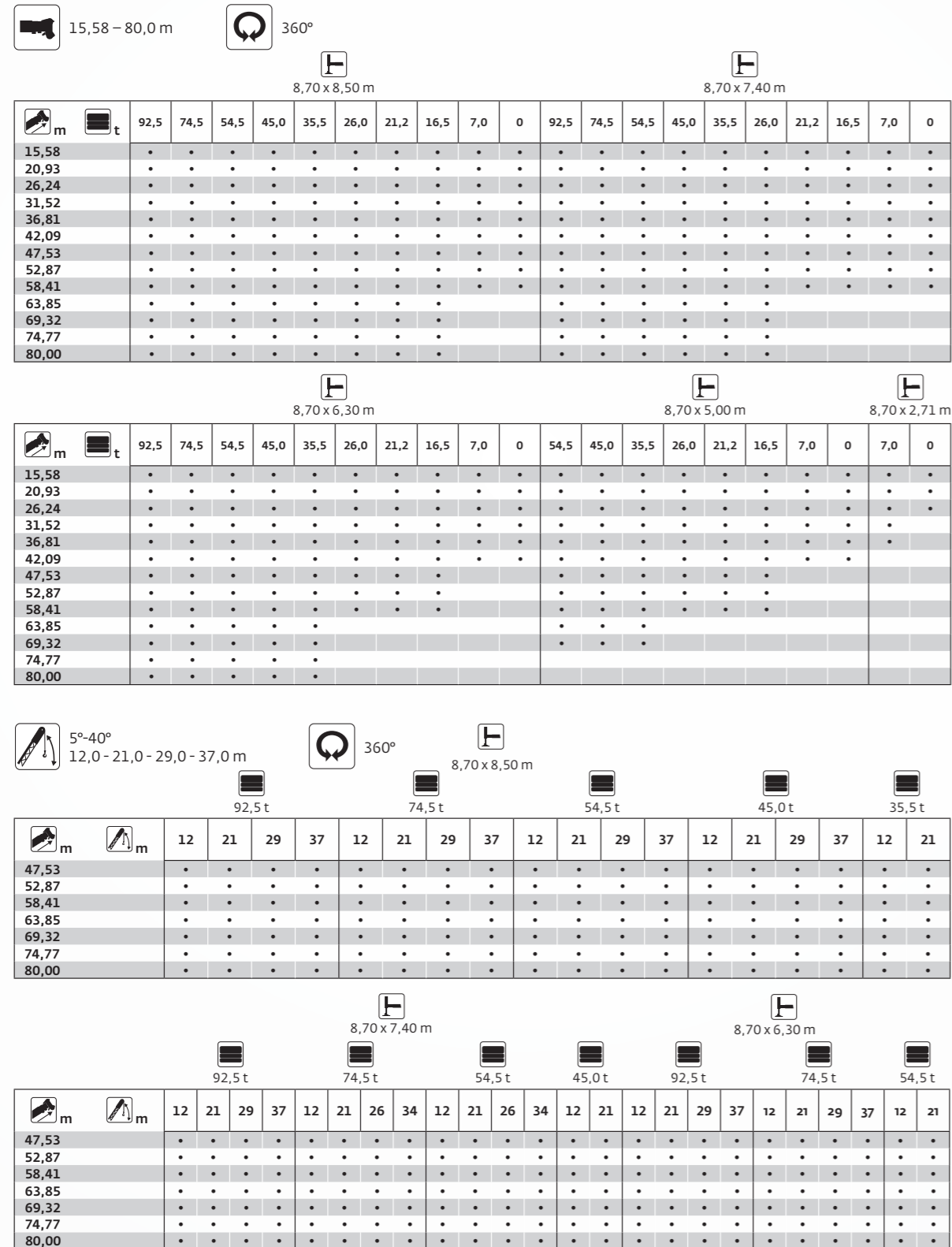
**CraneSTAR**



# LOAD CHART

## Load charts • Traglasten • Capacités de levage Capacidades • Capacità • Таблицы грузоподъемности

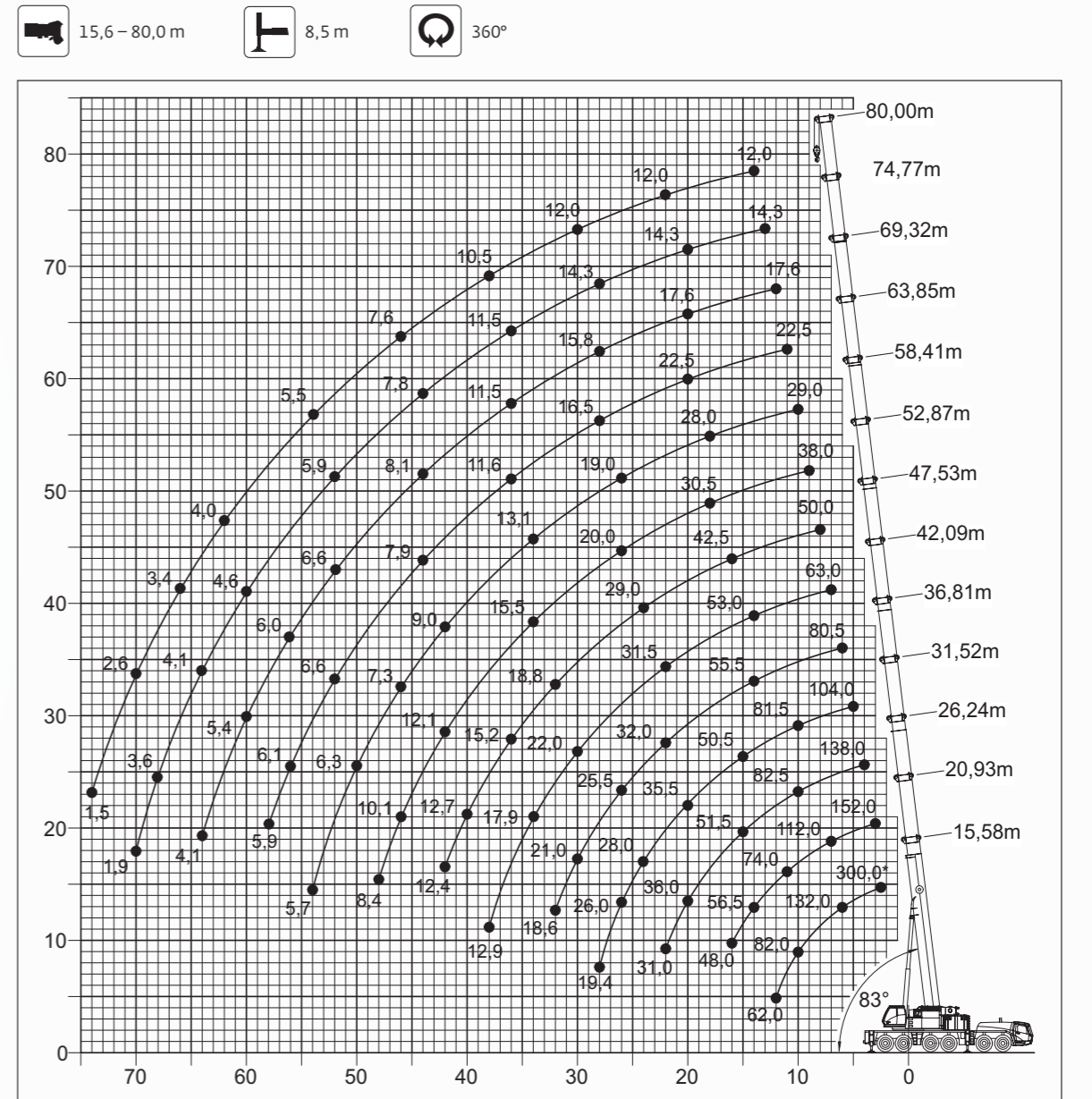
Overview • Übersicht • Tableau synoptique • Resumen de las tablas • Tabella riassuntiva • Общие сведения



# LOAD CHART

## Load charts • Traglasten • Capacités de levage Capacidades • Capacità • Таблицы грузоподъемности

Working range • Arbeitsbereiche • Diagramme de levage • Gama de trabajo • Area di lavoro • Грузовысотные характеристики

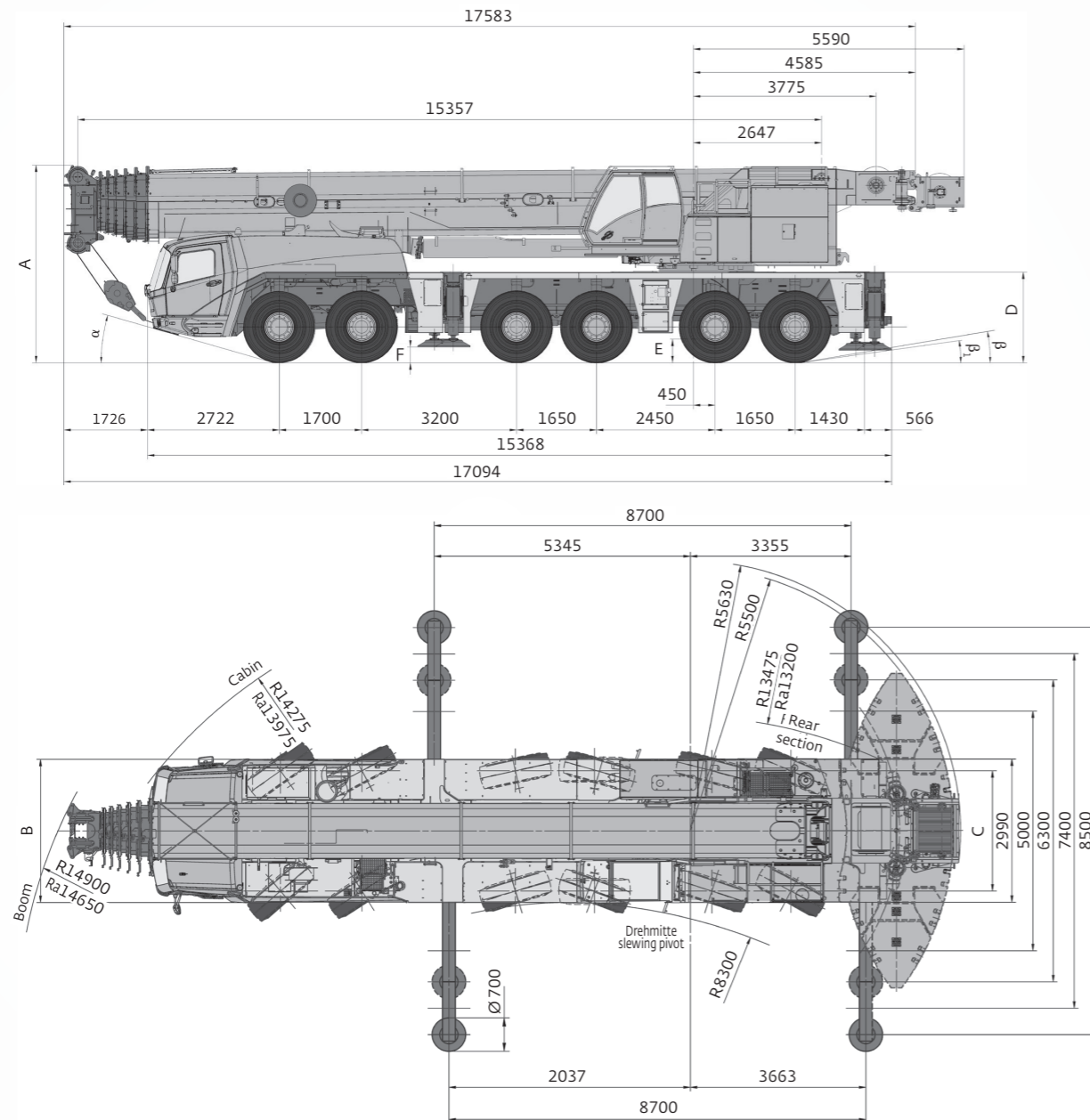


Hook block • Hakenflasche • Crochet-moufle • Gancho • Gancio • Крюковой блок	H (mm)
200 D	3650
160 D	3650
125 D	3300
80 D	3300
32 E	3200
12 H/B	2450

\* Over rear • Nach hinten • En arrière • Per la parte traseru • Sul posteriore • Над задней частью

# MACHINE DIMENSIONS

Dimensions • Abmessungen • Encombremet  
Dimensiones • Dimensioni • Размеры



Ra = Radius all wheels steered • Radius allradgelenke • Rayon toutes les roues directrices • Radio de giro con todas las ruedas giradas • Raggio di curva con tutte le ruote sterzate • Радіус поворота при управленні всіма колесами

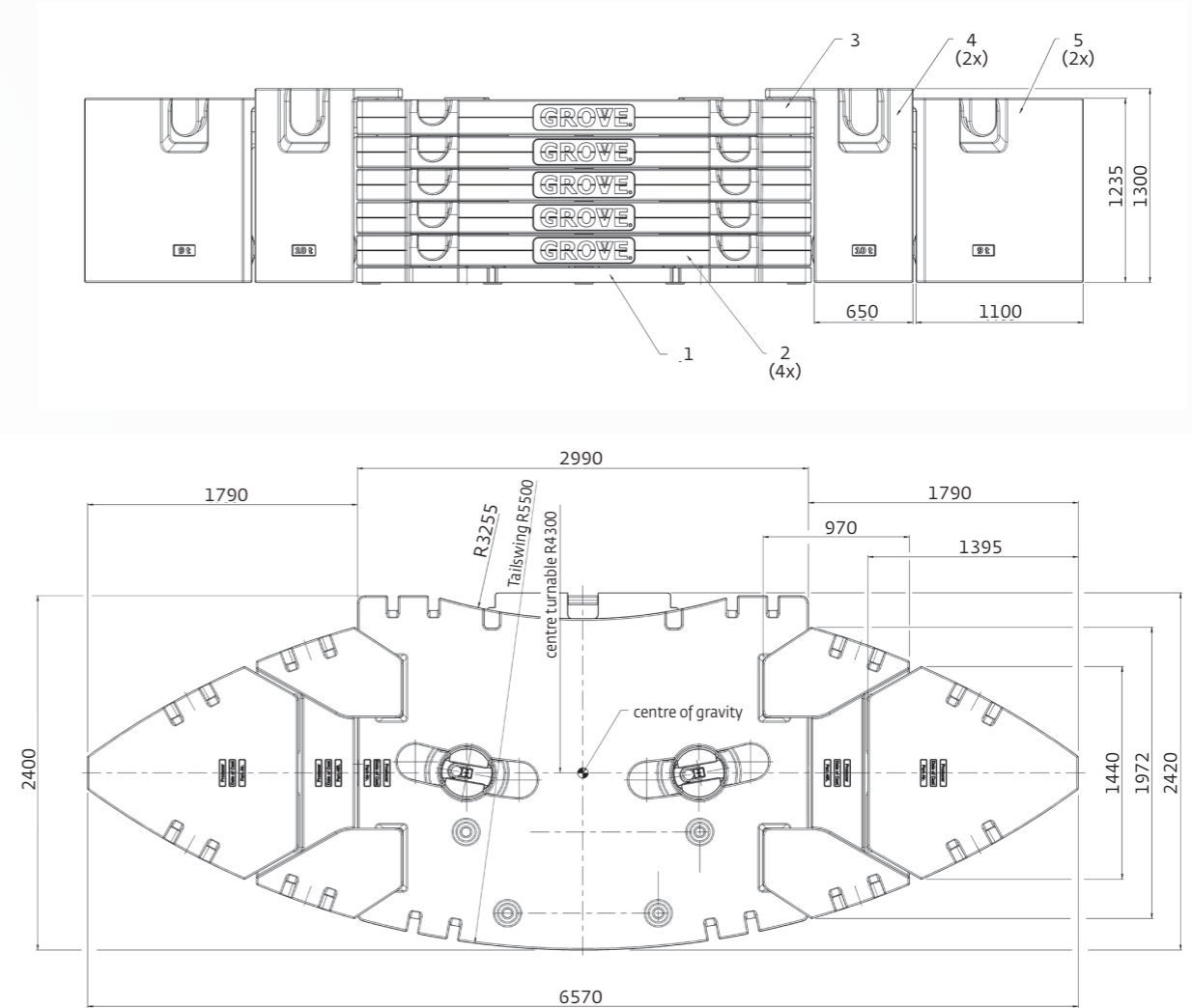
	A	A 130 mm**	B	C	D	E	F	α	β	β <sub>1</sub>
385/95 R25	3950	3820	2970	2570	1822	400	297	14	8	6
445/95 R25	4000	3870	2975	2510	1872	450	327	16	10	8
525/80 R25	4000	3870	3070	2530	1872	450	327	16	10	8

\*\* Lowered • Abgesenkt • Surbaissé • Rebaja • Abbassato • Спущенный

# MACHINE DIMENSIONS

Dimensions • Abmessungen • Encombremet  
Dimensiones • Dimensioni • Размеры

Counterweight • Gegengewicht • Contrepoids • Contrapesos • Contrappesi • Противовес



	1 7,0 t	2 9,5 t	3 9,5 t	4 10,0 t	5 9,0 t
7,0 t	x	-	-	-	-
16,5 t	x	x	-	-	-
26,0 t	x	2 x	-	-	-
35,5 t	x	3 x	-	-	-
45,0 t	x	4 x	-	-	-
54,5 t	x	4 x	x	-	-
74,5 t	x	4 x	x	2 x	-
92,5 t	x	4 x	x	2 x	2 x

---

# CONTACT US

---



## TUTT BRYANT GROUP LIMITED

**Tutt Bryant Group Limited - Head Office**  
Ground Floor, Quad 1, 8 Parkview Drive  
Sydney Olympic Park NSW 2127  
Ph: 02 9646 6000  
Fax: 02 9646 6098  
Email: [communications@tuttbryant.com.au](mailto:communications@tuttbryant.com.au)

## TUTT BRYANT HEAVY LIFT & SHIFT EASTERN REGION

**Tutt Bryant Heavy Lift & Shift - Brisbane**  
5 & 9 Motorway Circuit  
Ormeau QLD 4208  
Phone: 07 5540 8700  
Fax: 07 5540 8777  
Email: [bne@tuttbryant.com.au](mailto:bne@tuttbryant.com.au)

**Tutt Bryant Heavy Lift & Shift - Dandenong**  
80-86 Frankston Dandenong Road  
Dandenong VIC 3175  
Phone: 03 9554 0300  
Fax: 03 9554 0398  
Email: [mel@tuttbryant.com.au](mailto:mel@tuttbryant.com.au)

## TUTT BRYANT HEAVY LIFT & SHIFT HUNTER REGION

**Tutt Bryant Heavy Lift & Shift - Muswellbrook**  
Denman Road  
Muswellbrook NSW 2333  
Phone: 02 6541 6444  
Fax: 02 6541 6464  
Email: [mbk@tuttbryant.com.au](mailto:mbk@tuttbryant.com.au)

**Tutt Bryant Heavy Lift & Shift - Singleton**  
Maggie Street  
McDougalls Hill NSW 2333  
Phone: 02 6571 4644  
Fax: 02 6571 2946  
Email: [mbk@tuttbryant.com.au](mailto:mbk@tuttbryant.com.au)

## TUTT BRYANT HEAVY LIFT & SHIFT NORTHERN REGION

**Tutt Bryant Heavy Lift & Shift - Darwin**  
Lot 5062 Tivendale Road  
Berrimah NT 0828  
Phone: 08 8924 1333  
Fax: 08 8947 2240  
Email: [dwn@tuttbryant.com.au](mailto:dwn@tuttbryant.com.au)

## TUTT BRYANT HEAVY LIFT & SHIFT WESTERN REGION

**Tutt Bryant Heavy Lift & Shift - Redcliffe**  
30-54 Redcliffe Rd  
Redcliffe WA 6104  
Phone: 08 9230 0500  
Fax: 08 9477 6270  
Email: [per@tuttbryant.com.au](mailto:per@tuttbryant.com.au)

**Tutt Bryant Heavy Lift & Shift - Karratha**  
Lot 15, Exploration Drive  
Gap Ridge Estate  
Karratha WA 6714  
Phone: 08 9143 0089  
Fax: 08 9183 0489  
Email: [krt@tuttbryant.com.au](mailto:krt@tuttbryant.com.au)

**Tutt Bryant Heavy Lift & Shift - Port Hedland**  
Phone: 08 9172 2255  
Mob: 0488 901 575  
Email: [pthedland@tuttbryant.com.au](mailto:pthedland@tuttbryant.com.au)

**For more information visit us @ [tuttbryant.com.au/tbhls](http://tuttbryant.com.au/tbhls)**