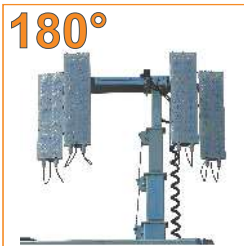
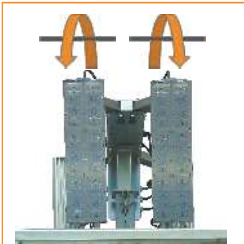


V20 HYPER



GENERAC Lighting Towers

V20 HYPER



OMNIA® LED TECHNOLOGY
The special Hyper version is equipped with **Omnia® LED Technology**. Floodlights are installed on a fully adjustable bracket allowing the operator to point the floodlights in any direction and provide total 360 illumination. Floodlights are also available with anti-glare system.



DIGITAL CONTROLLER
A digital controller specifically designed exclusively for our Generac lighting towers. Every function of the machine can be controlled and managed from a single digital panel.

LONG RUNNING TIME
Thanks to the V20's fuel saving features such as the small engine and LED lamps, this model can run up to 167 hours without refuelling.



Standard

Anti-glare

The **V20 HYPER** lamps can be equipped with anti-glare shells. The anti-glare floodlights are a perfect solution for roadworks and other applications where there is a risk of glaring workers and passers-by.

TECHNICAL DATA		V20 HYPER Y	V20 HYPER P
Lifting system	-	Hydraulic	Hydraulic
Min. dim.	cm	2200 x 1400 x 2440	2200 x 1400 x 2440
Max. dim.	cm	2200 x 1850 x 8500	2200 x 1850 x 8500
Dry weight	kg	980	980
Lamps power	W	4 x 320	4 x 320
Lamps type	-	LED	LED
Certified illuminated area	m ²	4,200	4,200
Total lumen	Lm	184,000	184,000
Mast rotation	°	340	340
Certified wind speed resistance	km/h	110	110
Tank capacity	liter	110	110
Engine model	-	Yanmar 2TNV-70 2 cyl. @1500/1800 rpm	Perkins 402D-05 2 cyl. @1500/1800 rpm
Engine cooling	W=Water/A=Air	W	W
Alternator	kVA/V/Hz	5/220/50 - 5/240/60	5/220/50 - 5/240/60
Outlet socket	kVA/V/Hz	2/220/50 - 2/240/60	2/220/50 - 2/240/60
Inlet plug	A/V/Hz	16/220/50 - 16/240/60	16/220/50 - 16/240/60
Running time	h	167	167
Avg. sound pressure level	dB(A) @ 7m	58	58
Trailers available	-	Road trailer or site-tow trailer	Road trailer or site-tow trailer

GENERAC® Lighting Towers