

TUTT BRYANT



TUTT BRYANT  
**HIRE**

CAPABILITY STATEMENT



**NATIONAL NETWORK. LOCAL EXPERTISE.**  
EVERYTHING YOU NEED TO OWN YOUR WORKSITE.



# CONTENTS

**04**

About Us

**06**

Our  
Capabilities

**08**

Equipment &  
Fleet

**12**

Safety  
Focus

**14**

Branch  
Locations

**16**

Contact Us

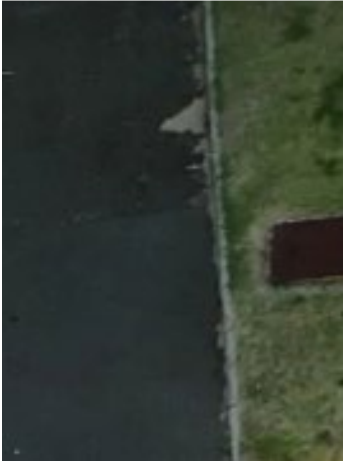
# ABOUT US

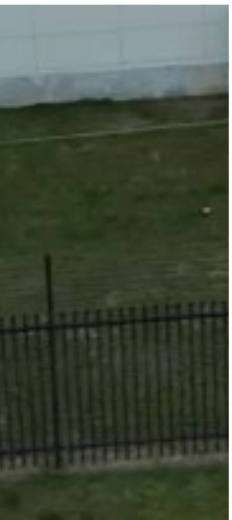
**Tutt Bryant Hire** is one of the leading plant and equipment hire services in Australia. Product range from earthmoving to general hire equipment.

.....

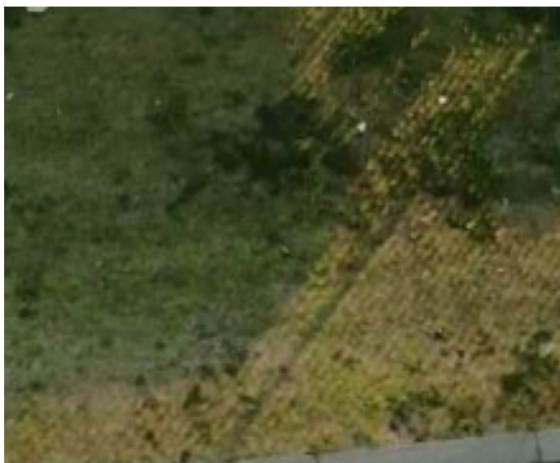
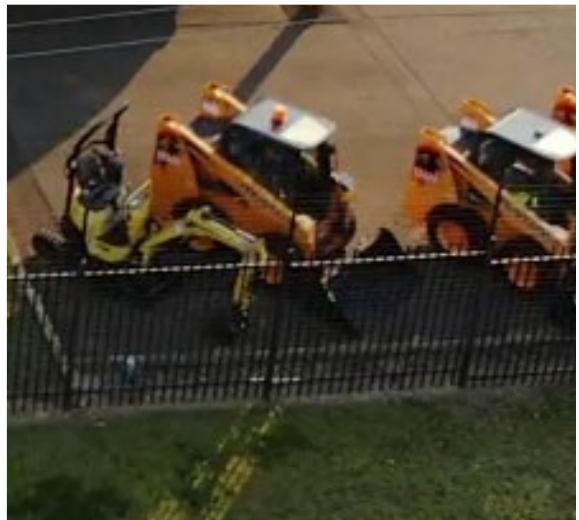
Tutt Bryant Hire is the construction plant and general equipment hire division of the Tutt Bryant Group.

Operating from geographically diverse location across **NSW, VIC, QLD, SA, WA** and **TAS**, in both regional and metropolitan areas. Each branch is supported by team of trade-qualified hire specialists to assist with equipment hire requirements. As well as offering a comprehensive range of equipment across construction plant, compaction, access, air and power generation, lighting towers, site accommodation, handling and lifting equipment, scaffolding, welding and cutting equipment, traffic management, and other general hire equipment.





*Our long-term relationships with key manufacturers enable us to provide the latest makes and models to our customers...*



# OUR CAPABILITIES AND COMMITMENT TO QUALITY

**At Tutt Bryant Hire, we hire more than just quality equipment.** What we offer is tailored solution to your project requirements, from equipment selection to delivery, through to technical support for the duration of the projects until completion. We also have field representatives to provide advices and assistance for the wet hire (with operator) and dry hire (without operator) services. Wet hire service is only applicable to selected models. Customers are encouraged to discuss with Tutt Bryant Hire representatives on the extend of operation support availability.

All equipment available for hire at our branch are compliant with state and national regulations, as well as thoroughly serviced, maintained and cleaned after every hire. Our long term relationships with key manufacturers are also enable us to provide the latest makes and models of the equipment to our customers. Some of the many brands of hire equipment we supply are JLG, Genie, Bomag, Yanmar, Sumitomo, Mustang, NorAm, Manitou and many more

Tutt Bryant Hire capabilities and resources will help to optimise a return on investment and to minimise down time.

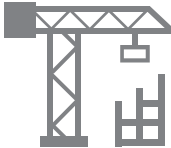
## Our Industry Coverage



**CONSTRUCTION / ENGINEERING**



**SMALL BUSINESS / TRADES & DIY**



**COMMERCIAL**



**MINING**



**INDUSTRIAL**



**INFRASTRUCTURE**



**MARINE**



**ROAD / RAIL**

**Our Industry Partners**



**Membership Associations & Certifications**



# OUR EQUIPMENT & FLEET

“

*Tutt Bryant Hire offers diverse range of equipment and tools for earthmoving, civil constructions, mining, rail maintenance, industrial, trade and DIY users.*

”



## ACCESS

- Cherry Pickers - Trailer Mounted
- Scissors Lifts
- Knuckle Boom Lifts
- Straight Boom Lifts



## EARTHMOVERS & EXCAVATORS

- Mini & Large Excavators
- Wheel Loaders
- Skid Steer Loaders
- Graders





## AIR COMPRESSORS & TOOLS

- Electric, Diesel & Petrol Air Compressors
- Air Breakers
- Air Hoses
- Air Tool & Accessories



## COMPACTION

- Vibrating Single Drum Rollers
- Vibrating Twin Drum Rollers
- Soil Compactors
- Multi-Tyred Rollers



## GENERAL HIRE

- Power Tools
- Cooling, Heating & Cleaning Equipment
- Painting & Landscaping Equipment
- Safety Equipment



## HANDLING & LIFTING

- Telehandlers
- Diesel, LPG & Dual Fuel Forklifts
- Bottle Jacks, Chain Blocks, Comealongs, Porta Power Pumps & Rams, Trifors

# OUR EQUIPMENT & FLEET



## LIGHT TOWERS

- 4 & 6 Head LED Light Towers
- Barrel Light Towers
- Solar Light Towers



## TRAFFIC MANAGEMENT

- Barriers
- Message Boards
- Road Plates
- Traffic Lights & Signs



## PUMPS & GENERATORS

- Diesel & Electrical Pumps
- Petrol Pumps
- Single Phase Generator - 240v
- Three Phase Generator - 415v



## SITE ACCOMMODATION

- Containers & Storage
- Site Sheds & Offices
- Portable Toilets & Showers



## TRAILERS

- Plant Trailers
- Furniture Trailers
- Car Trailers & Box Trailers
- Horse Float



## WELDERS & ACCESSORIES

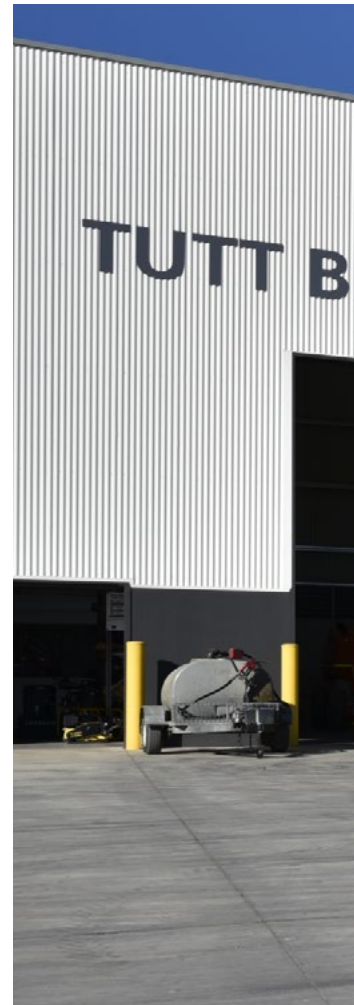
- Petrol & Diesel Welders
- Inverter (Caddy) Welders
- Single & Three Phase Welders
- Welding Accessories

# OUR SAFETY FOCUS AND APPROACH

Tutt Bryant Hire strongly believes that work related injuries, property and environmental damages can be preventable. It is in our best interest to ensure our employees' occupational health and safety. We are committed to create and maintain an Incident and Injury Free (IIF) workplace by integrating the Health, Safety and Environment (HSE) Management System approach, focusing on 'Leadership Accountability' and 'Management System Processes'.

## The key elements of a successful HSE management system measures:

- Safety plan and inspection checklists - Emergency response plans, evacuation procedures and safety assembly points, project shutdown operations, rescue and medical duties.
- Assign HSE duties to branch managers and/or staff
- Risk assessments and monitoring - Eliminate potential hazards, outline areas that are not safety compliance
- Provide adequate ongoing training on rules and safety procedures of the workplace
- Set measurable targets and reviewed regularly by the HSE management team
- No hazardous activities will be undertaken prior to completing the risk and safety assessment checklists
- All operations are fully compliance with legal requirements
- Provide visitors with thorough information on the safety and risk preventative measures, as well as the emergency procedures
- All incidents are to be reported to the HSE management team
- All incidents are to be identified and investigated thoroughly by the HSE management team to prevent any future recurrence
- Provide Injury Management and Rehabilitation Program to staff as required





*Health and safety is of utmost importance; Tutt Bryant Hire is committed to create an incident and injury free workplace...*



# TUTT BRYANT HIRE BRANCH LOCATIONS

## NEW SOUTH WALES

**Tutt Bryant Hire - Sydney (Erskine Park)**  
60 Tyrone Place  
Erskine Park NSW 2759

Ph: 02 8777 0300 | F: 02 8783 5826  
sydney@tuttbryanthire.com.au

**Tutt Bryant Hire - Newcastle (Beresfield)**  
11 Bowden Way  
Beresfield NSW 2322

Ph: 02 4903 8555 | F: 02 4903 8599  
newcastle@tuttbryanthire.com.au

**Tutt Bryant Hire - Coffs Harbour**  
28A Isles Drive  
Coffs Harbour NSW 2450

Ph: 02 5646 5600 | F: 02 6651 4223  
coffsharbour@tuttbryanthire.com.au

**Tutt Bryant Hire - Goulburn**  
99 Robinson Street  
Goulburn NSW 2580

Ph: 02 4823 4111 | F: 02 4823 4155  
goulburn@tuttbryanthire.com.au

**Tutt Bryant Hire - Singleton**  
59 Magpie Street  
Singleton NSW 2330

Ph: 02 6571 0700 | F: 02 6572 3642  
singleton@tuttbryanthire.com.au

## VICTORIA

**Tutt Bryant Hire - Dandenong**  
80-86 Frankston - Dandenong Road  
Dandenong VIC 3175

Ph: 03 9554 0340 | F: 03 9554 0398  
dandenong@tuttbryanthire.com.au

**Tutt Bryant Hire - Laverton North**  
3 Westside Drive  
Laverton North VIC 3026

Ph: 03 8388 2400 | F: 03 9318 0336  
laverton@tuttbryanthire.com.au

**Tutt Bryant Hire - Geelong (Moolap)**  
300 Portarlington Road  
Moolap VIC 3224

Ph: 03 5248 6266 | F: 03 5248 6122  
moolap@tuttbryanthire.com.au

**Tutt Bryant Hire - Portland**  
8 Cellana Court  
Portland VIC 3305

Ph: 03 5526 4060 | F: 03 5523 6667  
portland@tuttbryanthire.com.au

**Tutt Bryant Hire - Traralgon**  
37-41 Eastern Rd  
Traralgon VIC 3844

Ph: 03 5175 9700  
traralgon@tuttbryanthire.com.au



Call our HIRE specialists on **1300 137 202**

## TASMANIA

### Tutt Bryant Hire - Launceston

11 Connector Park Drive  
Kings Meadows TAS 7249

Ph: 03 6348 4500  
launceston@tuttbryanthire.com.au

## WESTERN AUSTRALIA

### Tutt Bryant Hire - Bunbury

6-10 Hawkins Street  
East Bunbury WA 6230

Ph: 08 9796 8700  
bunbury@tuttbryanthire.com.au

### Tutt Bryant Hire - Karratha

Lot 15 Exploration Drive  
Karratha WA 6714

Ph: 1300 137 202  
krt@tuttbryant.com.au

### Tutt Bryant Hire - Kwinana Beach

1 Thorpe Way  
Kwinana Beach WA 6167

Ph: 08 6595 2000 | F: 08 9419 1720  
kwinana@tuttbryanthire.com.au

### Tutt Bryant Hire - Perth (South Guildford)

50 Great Eastern Highway  
South Guildford WA 6055

Ph: 08 9478 0658  
perth@tuttbryanthire.com.au

## QUEENSLAND

### Tutt Bryant Hire - Gladstone

57 Lord Street  
Gladstone QLD 4680

Ph: 07 4970 3444 | F: 07 4972 8444  
gladstone@tuttbryanthire.com.au

### Tutt Bryant Hire - Mackay

189 Boundary Road  
Paget QLD 4740

Ph: 07 4952 8000 | F: 07 4952 8099  
mackay@tuttbryanthire.com.au

### Tutt Bryant Hire - Cairns (Portsmith)

Cnr Lyons & Hartley Streets  
Portsmith QLD 4870

Ph: 07 4052 4488 | F: 07 4052 4499  
portsmith@tuttbryanthire.com.au

### Tutt Bryant Hire - Townsville (Mt Louisa)

19-21 Ronald Court  
Mt Louisa QLD 4814

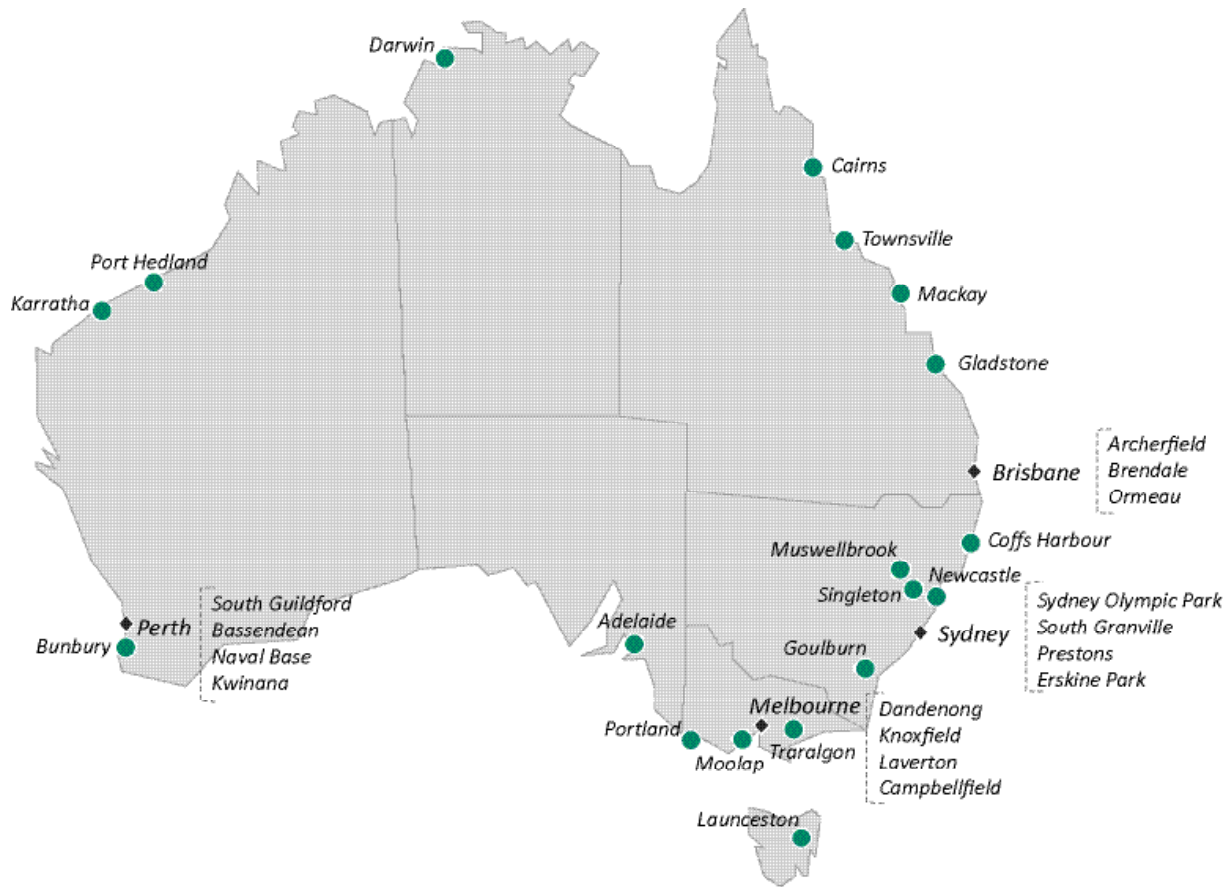
Ph: 07 4727 3888 | F: 07 4774 3755  
townsville@tuttbryanthire.com.au

## ADELAIDE

### Tutt Bryant Hire - Adelaide (Mawson Lakes)

908 Main North Road  
Mawson Lakes SA 5095

Ph: 08 8162 0930  
adelaide@tuttbryanthire.com.au



## TUTT BRYANT GROUP LIMITED - HEAD OFFICE

Ground Floor, Quad 1, 8 Parkview Drive  
Sydney Olympic Park NSW 2127

Phone: 02 9646 6000  
Fax: 02 9646 6098  
Email: [communications@tuttbryant.com.au](mailto:communications@tuttbryant.com.au)

---

[tuttbryant.com.au](http://tuttbryant.com.au)

©Copyright Tutt Bryant Group Limited  
2022

FOLLOW US ON SOCIAL MEDIA   