

# CR-130RV



CR-130RV

9-37, Higashi-ohi 1-chome, Shinagawa-ku, Tokyo, 140-0011, Japan / Tel.: Head Office: +81 (0) 3 3458-1111 Overseas Marketing Department: +81 (0) 3 3458-1115 / FAX: +81 (0) 3 3458-1151

CITYRANGE

# CR-130RV



Web site  
kato-works.co.jp



/ KATO WORKS OFFICIAL  
youtube.com/user/katowork



Instagram

instagram.com/kato\_works\_official/



- Before you operate the machine, study the instruction manual thoroughly and follow the instructions it contains.
- Some differences may arise between the machine delivered and the photographs in the catalog due to any added improvements.  
Note: The specification may be changed without notice.
- The actual colors of the body and interior may appear slightly different from those shown in this catalog due to the limitation of photography and printing.

● Contact for enquiry:

## KATO

### KATO WORKS CO.,LTD.

9-37, Higashi-ohi 1-chome, Shinagawa-ku, Tokyo, 140-0011, Japan  
Tel.: Head Office: Tokyo +81 (0)3 3458-1111  
Overseas Marketing Department: Tokyo +81 (0)3 3458-1115 / FAX: Tokyo +81 (0)3 3458-1163  
<https://www.kato-works.co.jp>

QUALITY & EXPERIENCE  
SINCE 1895

C05891  
2.2023-1000(FB)1

# KATO



# Super Versatile City range Crane for Professionals

## Approaching the small space



The CR-130RV is one of the most compact mobile crane in the market. It approaches to the confined space that any other mobile cranes cannot approach. 4x4 steering provides compact turning radius and maneuverable traveling. Not only construction site but also plant, warehouse, factory, or island are the territory of CR-130RV. The GVW is only 13,825kg and able to work on the site which have weight restriction like old city, bridge or building floor under construction.

**GVW : 13,825 kg**



◆ Operator can monitor left or rear blind spot and winch condition via multiple view colour Monitor.



## Short tail!



## Lift in the small space



The strong and powerful main boom of 24m. The simultaneous telescoping makes operator to start and finish the lifting easily and smoothly. The fly Jib is up to 5.5 m and the luffing operation is hydraulic. The fly jib approach to the farther target even the crane have to be set up close to the the building. One of the biggest feature is its compact tail slewing radius. It is only 1.60m and does not require big space for slewing. CR-130RV could lift even the work site like along to the building.

## Utilize the small space



## Outrigger extension width

◆ Multiple outrigger positions are available for optimum lifting operations.



The job site of CR-130RV is very confined. However, this new CR-130RV has applied electronic control system. Outrigger operation is now available by remote control. Operator is able to check the outriggers position closely. Outriggers have various positions that support suitable lifting to each job site.

## Searcher Hook solution for the small space



◆ Casters make moving the Searcher Hook easy and effortless.



The lifting work in warehouse or factory have height limit. The solution for these work sites is Searcher Hook which is available for CR-130RV. The Searcher Hook is easy to install and able to select from 2 positions. The maximum lifting weight is 3t and useful to lift heavy load such as manufacturing facility in the factory. As long as the Searcher Hook can be inserted you are able to lift and move the load even in very small space.



24.0m

24m

## High rigidity 6-section SUPERBOOM

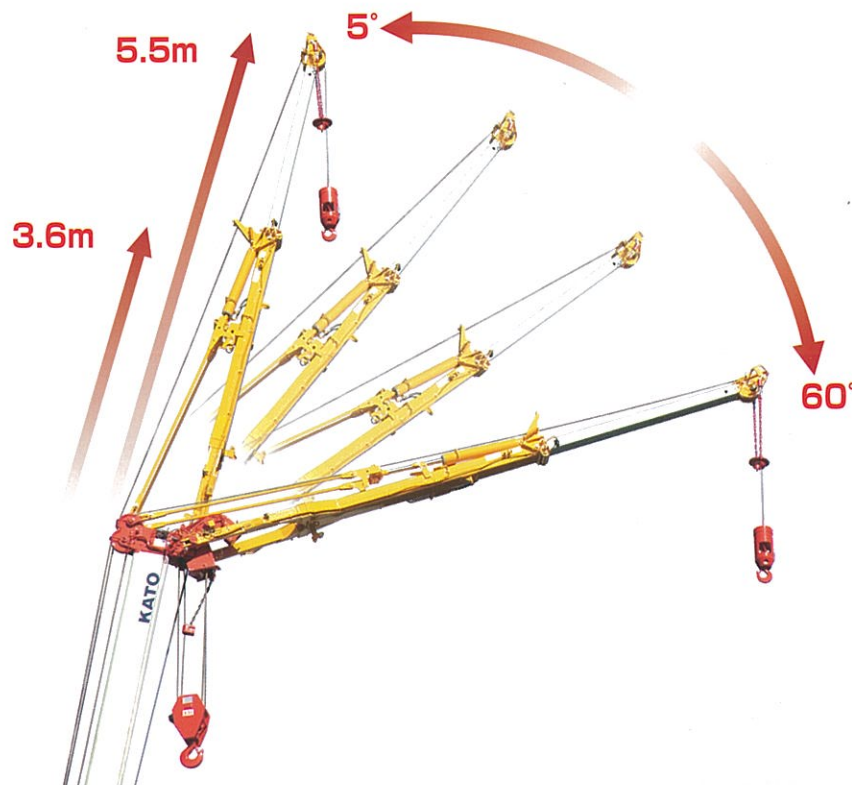
### ◆ Boom lifting capacity SUPERBOOM

- Boom type..... 6-section round shaped full power boom
- Maximum lifting capacity..... 13t x 1.7m
- Boom length..... 5.3m ~ 24m
- Maximum lifting height..... 24.8m

### ◆ Jib lifting capacity

- Jib type..... 2-section hydraulic luffing power jib
- Maximum lifting capacity..... 1.6t x 82°
- Jib length..... 3.6m, 5.5m
- Maximum lifting height..... 30.3m
- Jib offset angle..... 5° ~ 60°

- Tail slewing radius..... 1.6m



## Electronic Control Joystick

It applies electronic control levers which are easy to operate. Thanks to the electronic control system you are able to set and record the crane speeds. More functional and more comfortable to all operators.

▼ Liquid crystal display cluster meter (At view while traveling)



(km/h indication)



(MPH, km/h indication)

## Seat

Seat suspension is available. The seat provides comfortable reclining.



▲ 3 position seat belt

## Touch screen control COR information display

Information such as fuel consumption, operation hour are available on display.



### ECO function

- This function supports economical crane operation.

### Crane operation

- It limits the maximum engine speed to reduce the fuel consumption and noise.



- The new outrigger system facilitates the process of outrigger setting. The vertical cylinders extend and automatically stop at horizontal position while operating semi-automatic leveling switch.



▲ Multiple view colour Monitor



▲ Emergency engine stop switch (for crane operation)



▲ New Air Conditioner with Dehumidification function

## Touch screen control ACS moment limiter

A range of limiting functions to increase Safety during Operation.



### Load factor limit

- It limits the load factor to 80% ~ 100% of the rated lifting capacity and keep a safe margin.

### Working range limit

- It limits the 2 vertical surface range and avoid collision.

## Electronic Control Pedal

This new pedal controls Boom telescoping, Main Winch and Aux. Winch whichever is selected. The electronic control pedal provides flexible crane operation.



## Hill Start Assistance **NEW**

This new function provides the brake at the time of acceleration on the hill. Activate and deactivate is selectable.



Note) It depends on the traveling condition and will not prevent all retreats.

## Clear and safe view

Operator can monitor left or rear blind spot and winch condition via multiple view colour Monitor.



## KATO SAFETY VIEW SYSTEM



## Surround View Camera

Operator is able to monitor a clear 360° view of the crane with this new feature. This aids safer stopping and/or parking.

## Human Detect Assist System

The safety cameras detect human in blind spot areas and alerts the operator visually and audibly.

Note) It can not make 3 different detection at the same time. The operator decides which camera to use for detection.  
 Note) This is support function for the operator. Therefore operator must always be vigilant when driving.  
 Note) The Safety View System less specification is also available.

## K·COR



The K·COR is data logger system which records working status of crane. Record is extractable by the SD card and capable to confirm through K·COR program.

## ABS

The ABS braking system has been provided as a standard feature. Ensures even safer braking especially on slippery ground.

## Step less adjustable sun shade

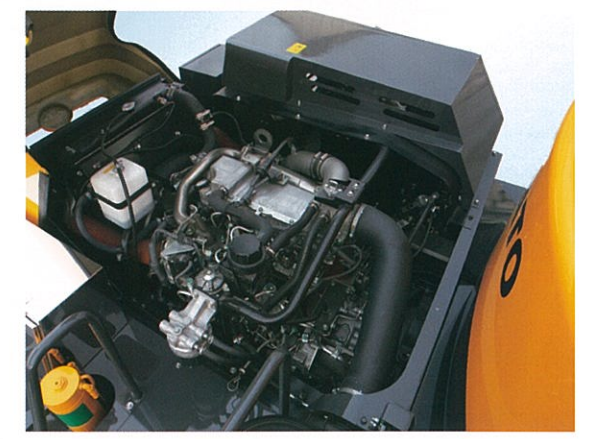
The new sun shade cuts the sun light completely. This is useful to the operator by confirming lifting operation outside of the cabin clearly.



## Environment-friendly and high performance engine

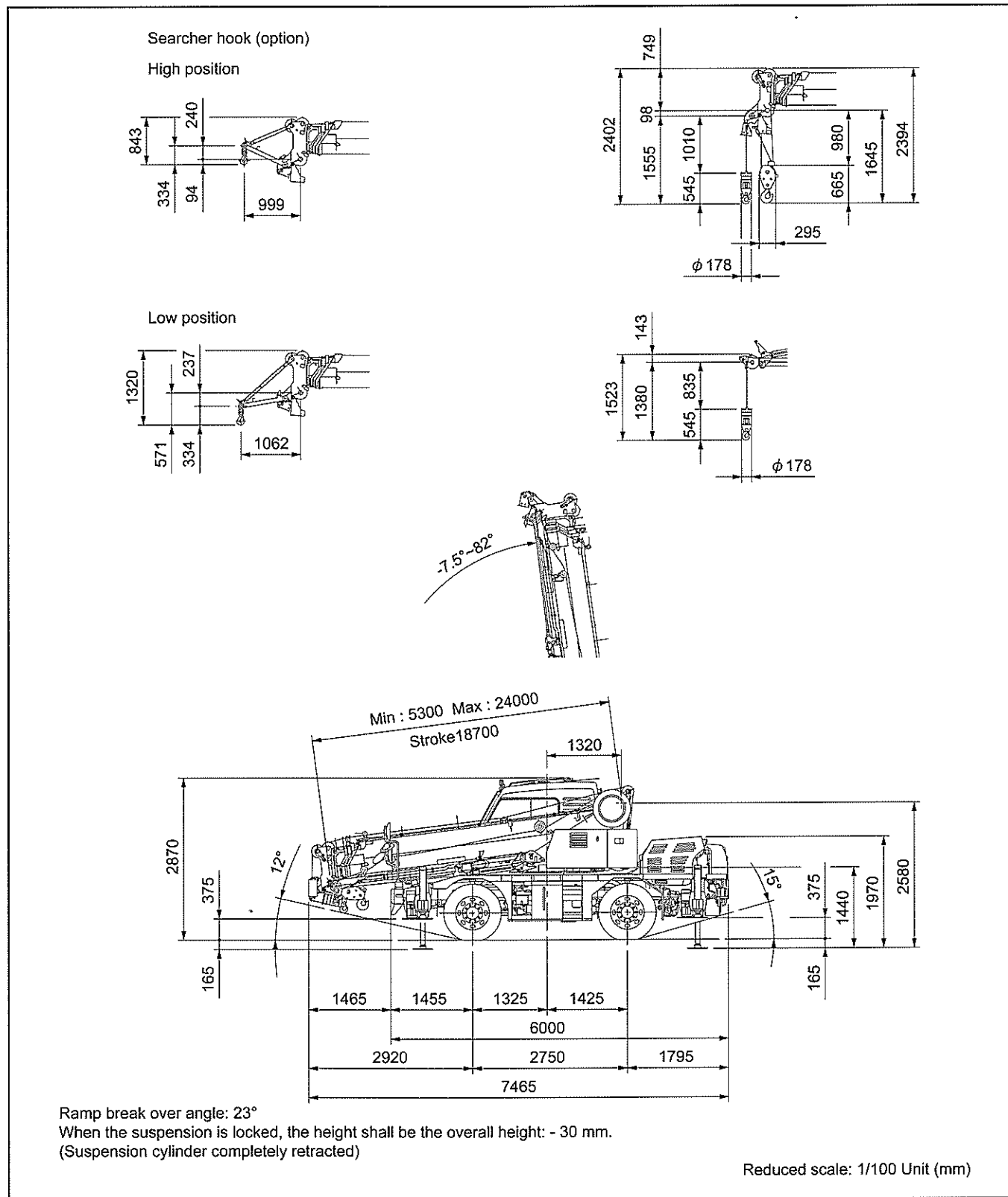
◆ The SCR (Selective Catalytic Reduction) and DPF reduce the NOx and PM in the emission.

- Model..... HINO J05E-VA (EU Stage V)
- Piston displacement..... 5.123L
- Maximum Output..... 129kW / 2,500min<sup>-1</sup>
- Maximum Torque..... 540N·m / 1,600min<sup>-1</sup>





Overall view



**KATO**

**CITYRANGE SUPERBOOM CR-130RV**

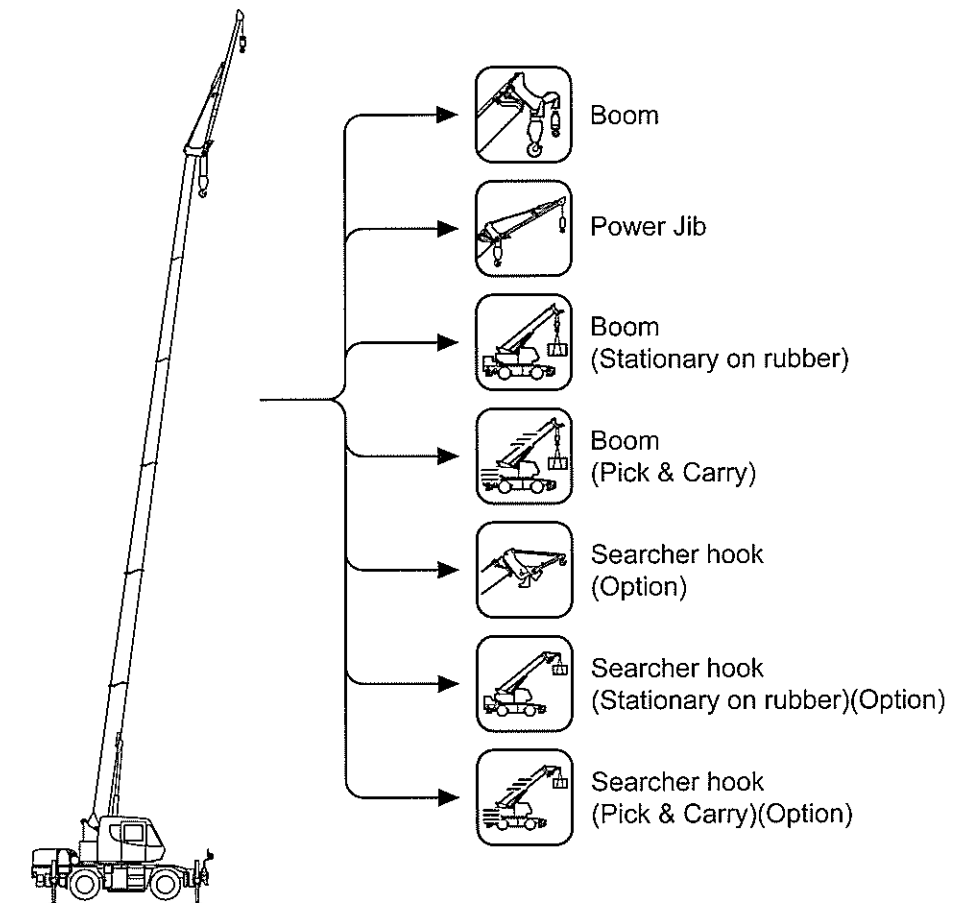


Table of Contents

SPECIFICATION .....	1
Option List .....	2
Notes for the lifting capacity chart .....	3
WORKING RANGE .....	4
LIFTING CAPACITY	
5.3m — 24.0m Boom .....	6
16.52m Boom+3.6m Jib .....	7
16.52m Boom+5.5m Jib .....	7
24.0m Boom+3.6m Jib .....	8
24.0m Boom+5.5m Jib .....	8
Stationary on rubber .....	9
Pick & carry .....	9
Searcher hook (option) .....	10
Searcher hook (Stationary on rubber) (option) .....	12
Searcher hook (Pick & carry) (option) .....	12
Minimum path width .....	13
Overall view .....	14
Overall view .....	15

\* KATO products and specifications are subject to improvements and changes without notice.

Address inquiries to:

**KATO**  
**KATO WORKS CO.,LTD.**

9-37, Higashi-ohi 1-chome, Shinagawa-ku, Tokyo, 140-0011, Japan  
 Tel. : Head Office Tokyo (03) 3458-1111  
       Overseas Marketing Department. Tokyo (03) 3458-1115  
 Fax. : Tokyo (03) 3458-1152  
 URL : <https://www.kato-works.co.jp>

C05901  
2.2023-1000 (TI) 1

# SUPERBOOM CR-130RV

## [SPECIFICATION]

<b>■ CRANE</b>	
Description	City range crane with maximum lifting capacity 13 ton
<b>● Crane specification</b>	
Maximum rated lifting capacity	5.3 m Boom 13,000kg × 1.7 m (Parts of line : 8)
	9.04m Boom 6,000kg × 4.0 m (Parts of line : 4)
	12.78m Boom 6,000kg × 4.0 m (Parts of line : 4)
	16.52m Boom 5,000kg × 4.5 m (Parts of line : 4)
	20.26m Boom 4,700kg × 4.0 m (Parts of line : 4)
	24.0 m Boom 3,200kg × 5.5 m (Parts of line : 4)
	3.6 m Jib 1,600kg × 7.5' (Parts of line : 1)
	5.5 m Jib 1,000kg × 70' (Parts of line : 1)
Rooster 1,800kg (Parts of line : 1)	
Searcher hook 3,000kg	
Boom length	5.3m ~ 24.0m
Jib length	3.6 m, 5.5 m (2 section, offset 5° ~ 60°)
Searcher hook	0.8m
Maximum rated lifting height	24.8m (Boom) 30.3m (Jib)
Hoisting line speed (winch up)	Main winch 118m / min (at 5th layer)
	Auxiliary winch 106m / min (at 3rd layer)
Hoisting hook speed (winch up)	Main winch (Parts of line : 8) 14.75m / min (at 5th layer)
	Auxiliary winch (Parts of line : 1) 106.00m / min (at 3rd layer)
High-speed lowering	160m / min (at 3rd layer)
Rope speed	160m / min (at 3rd layer)
Boom derricking angle	-7.5° ~ 82°
Boom derricking time	29s / -7.5° ~ 82°
Boom extending speed	5.3m ~ 24.0m / 64s
Slewing speed	2.4min <sup>-1</sup>
Tail slewing radius	1,600mm
<b>● Equipment and structure</b>	
Boom type	Round-shaped, 6-section hydraulically telescopic type (the 2nd and 3rd boom sections at the same time, the 4th, 5th and 6th boom sections at the same time)
Jib type	2 sections (2nd section of draw-out type) Hydraulic stepless tilting type (offset angles 5° ~ 60°)
Searcher hook type	2 positions (high/low) selectable
Boom extension/retraction equipment	Two hydraulic cylinders and wire ropes used together
Boom derricking/lowering equipment	One hydraulic cylinder of direct acting type with pressure-compensated flow control valve
Jib derricking/lowering equipment	Hydraulic cylinder
Winch system Main & Auxiliary winches	Driven by axial plunger type hoisting motor through planetary gear reduction. Controlled independently by 2-speed (high / low) selection type respective operating lever. Equipped with automatic brake.
Slewing equipment	Equipped with Hydraulic motor drive and a planetary gear speed reducer (built-in negative brake), Free / Lock change-over type
Slewing bearing	Ball bearing type
Outriggers	Type Hydraulic H-beam type (with float and vertical cylinder in single unit)
	4,750mm (Fully extended)
	4,300mm (Intermediately extended)
	3,700mm (Intermediately extended)
	2,700mm (Intermediately extended)
Wire rope for hoisting	Main winch Diameter: 11.2mm × Length: 133m
	Auxiliary winch Diameter: 11.2mm × Length: 66m
<b>● Hydraulic equipment</b>	
Oil pump	4 pumps, plunger and gear type
Hydraulic motor	Hoisting motor Axial plunger type
	Slewing motor Axial plunger type
Control valve	Double acting with integral check and relief valves
Cylinder	Double acting type
Oil reservoir capacity	150L
<b>● Safety devices</b>	
	ACS (Automatic Crane System with Voice alarm), Slewing automatic stop system, Overhaul prevention device, Working range limit mode, Outrigger status detector, Electronical horizontal detector, Hydraulic safety valves, Boom derricking / telescoping holding valve, Jib derricking holding valve, Winch holding valve, Automatic winch brake, Slewing brake valve, Outrigger lock pins, Seat switch
<b>● Standard equipment</b>	
	Hydraulic oil cooler, Hydraulic oil temperature warning device, Slewing warning lamp, Winch drum roller, Winch drum turning indication device, Winch over unwinding device, ACS outside indicator (LED), Winch view camera, Working light (LED) on boom, table and cab, K-COR (KATO Crane Operation Recorder), Hook for 13 ton, Hook for 1.8 ton
<b>● Operator's cab</b>	
	All steel welded construction, 1 person, Auto air conditioner, Rubber mounted, Adjustable seat with suspension, Power Window (external closing switch), Front windshield wiper & washer (2 speed wiper), Roof window wiper & washer (2 speed wiper), AM/FM Radio, Interior lamp, Step lamp, USB socket (output 5V-2.4A×2), Electric control type operation lever

<b>■ CARRIER</b>	
<b>● Carrier specification</b>	
Maximum traveling speed	55km/h
Grade ability	59% (computed at G.V.W. = 13825 kg)
Minimum turning radius (center of extreme outer tire)	6.5 m (2 wheel steer)
	3.92 m (4 wheel steer)
<b>● Engine</b>	
Model	HINO J05E-VA (EU Stage V)
Type	4 cycle, 4 cylinders, water cooled, direct injection turbo-charged diesel engine with intercooling
Piston displacement	5.123L
Max. power	129kW at 2,500min <sup>-1</sup>
Max. torque	540N·m at 1,600min <sup>-1</sup>
Diesel Fuel recommended by KATO must be used	
<b>● Equipment and structure</b>	
Drive system	Switches between 2 wheel drive (4 × 2) and 4 wheel drive (4 × 4)
Torque converter	Engine mounted 3 elements 1 stage (with lock up clutch)
Transmission	Remote mounted full automatic
Number of speeds	4 forward & 1 reverse speed
Axles	Front Planetary, drive/steer type
	Rear Planetary, drive/steer type
Suspension	Front Taper-leaf spring, Hydraulic locking device with suspension cylinder
	Rear Taper-leaf spring, Hydraulic locking device with suspension cylinder
Brake system	Service Air-over hydraulic disk brake on 4 wheels (front and rear independent circuit) ABS (Anti-lock Brake System)
	Parking Spring applied, electrically air released parking brake mounted on front axle, Internal expanding type
	Auxiliary Exhaust brake, Service brake lock
Steering	Full hydraulic power steering, Completely independent front and rear steering (with automatic rear wheel steering lock system)
Tire size	Front 275 / 80 R22.5 151 / 148J
	Rear 275 / 80 R22.5 151 / 148J
Fuel tank capacity	250 L
Batteries	(12V-100Ah) × 2
<b>● Safety devices</b>	
	Emergency steering device, Rear wheel steering lock system (automatic), Brake fluid leak warning device, Service brake lock, Hill-start assist, Suspension lock, Engine overspeed alarm, Radiator coolant level warning device, Low air warning device, Electrically retractable side view mirrors, Left front view camera, Rear view camera on table (wired), 7-inch monitor, Three point seat belt, Boom guard
<b>● Standard equipment</b>	
	Adjustable steering wheel, LED head lamp
<b>■ GENERAL Dimensions</b>	
Overall length	7,465mm
Overall width	1,995mm
Overall height	2,870mm
Wheel base	2,750mm
Treads	Front 1,680mm
	Rear 1,680mm
Passenger capacity	One person
Gross vehicle weight	Gross weight 13,825 kg (Without optional equipments)
	Front axle 6,895 kg (Without optional equipments)
	Rear axle 6,930 kg (Without optional equipments)
<ul style="list-style-type: none"> <li>● Stow the hooks in place before traveling.</li> <li>● Before you use this machine, read the precautions in the instruction manual thoroughly to operate it correctly.</li> <li>● KATO products and specifications are subject to improvements and changes without notice.</li> </ul>	

59A0010001  
59A0010101

# CR-130RV

## Option List

1: Without safety view system  
2: With safety view system

◎ : Standard ● : Option — : No setting

Constitution	1	2	
Crane Part	PA system	●	●
	Outrigger operation radio control *1	●	●
	Searcher hook	●	●
	Door visor	●	●
	Floor mat	●	●
	AM/FM Radio *2	●	●
	Bluetooth radio *3	●	●
	Hands free microphone *4	●	●
	Window film	●	●
	Aluminum outrigger plate and storage	●	●
Carrier Part	Resin outrigger plate and storage	●	●
	Left front view camera, Rear view camera on table (wired), 7-inch monitor	◎	—
	Safety view system Left front, Left rear and Right rear view camera (With human detection assist function) 12.1-inch touch monitor, PDF display function	—	◎
	Rear view camera (Wireless, mounted on carrier) *5	●	—
	Way side lamp	●	●
	Electrically retractable side view mirrors *6	◎	◎
	Electrically retractable side view mirrors with defroster *7	●	●
	Mad guard	●	●
	Side marker lamp *8	●	●
	Side marker lamp bracket (No lamps) *9	●	●
LED side marker lamp (With underlight) *10	●	●	
Wheel stopper	●	●	
Stainless steel tool box	●	●	
Large size tool box	●	●	

(Note 1) Availability of \*1, \*3 and \*5 is based on local regulations. Please contact to your local KATO dealer and confirm the availability.

(Note 2) \*3 and \*2 cannot be selected at the same time.

(Note 3) \*4 can be selected only when \*3 is installed.

(Note 4) \*7 and \*6 cannot be selected at the same time.

(Note 5) \*10, \*9 and \*8 cannot be selected at the same time.