



# MORE POWER, MORE DEPTH EFFECT.

SMART LINE SINGLE DRUM ROLLERS.





# MILLIONS OF KILOMETRES BEAR OUR SIGNATURE.

Whoever constructs roads, shapes landscapes, or carries out other earthworks projects needs to master at least one thing: compaction. And to ensure you achieve the best results, we build the best machines for the job. From compact, manoeuvrable single drum rollers to the powerful 28-ton machine. For over 60 years, the history of our company has also been synonymous with the history of road construction and compaction technology.

BOMAG single drum rollers set the standard. With our accumulated know-how, we are an innovation driver that sets the pace for an entire industry. In the process, we have developed numerous new technologies from systems for measuring and controlling compaction, such as VARIOCONTROL, BOMAP or

TERRAMETER, to an efficient reduction of operating costs with ECOMODE and ECOSTOP.

Our global network of experts and partners in over 120 countries supports you with everything from the configuration of the machines to providing solutions for the most challenging of tasks.

We owe our innovative strength to the commitment of our more than 2,300 employees worldwide. A source of know-how that has made us the global market leader in this sector. The reason for this is our unconditional commitment to quality: in product development and production, the qualification of our employees, and a service that guarantees optimal on-site support.





# ROBUST AND RELIABLE IN EVERYDAY USE.

## INTUITIVE OPERATION

- One switch for each function
- Self-explanatory symbols reduce familiarisation time

## HIGHEST COMPACTION PERFORMANCE

- High amplitudes for maximum depth effect
- Flexible use thanks to easy-to-mount padfoot segmented casing







## COMFORTABLE AND SAFE WORKING

- Generous legroom and space
- Optimal illumination for night work thanks to worklights
- Excellent front and rear visibility

## EFFICIENT COMPACTION

- Measuring and documenting in real time: ECONOMIZER, TERRAMETER and BOMAP
- No unnecessary passes

## EASY SERVICING

- Maintenance-free articulated joint
- All components arranged for easy access

## ALWAYS READY FOR OPERATION:

- Maximum component protection thanks to the impact-resistant engine hood
- Efficient even at extreme temperatures

# SOUND TECHNOLOGY. HIGHEST QUALITY.

*BOMAG single drum rollers set the standard in soil compaction. The global market leader's entire know-how and experience went into the development of the Smart Line series. The result speaks for itself: sound technology and low running costs. In short: BOMAG single drum rollers set the standard.*

BOMAG single drum rollers are consistently designed for durability. The result: maximum availability and high resale value. A BOMAG is an investment that always pays off. After all, it's not the purchase price that determines cost effectiveness but the total cost of ownership over the machine's lifetime.

## **A SELECTION OF FEATURES THAT DEMONSTRATE THE BOMAG QUALITY ADVANTAGE:**

- Fan-cooled exciter
- BOMAG cooling system: fit for the tropics
- Sheathed wiring looms
- Sealed central electrics
- Durable paint finish
- Effective hose protection
- UV-resistant hydraulic hoses
- Closed rear frame to protect components
- Robust hoods
- Maintenance-free articulated joint
- Multi-stage air and fuel filters
- Electric engine monitoring
- Plastic anti-corrosion diesel tank
- Vandalism protection

BOMAG insists on the highest quality standards; quality management is certified to ISO 9001. All components must prove their reliability in extensive tests. Smart Line single drum rollers are geared to withstand even the harshest conditions. BOMAG customer service and parts supply are always local. And as an expert in compaction technology, BOMAG offers unparalleled support on application issues – the team is also happy to advise and assist customers directly on site.



# NO COMPROMISES.

*Single drum rollers play a crucial role in the construction process. They literally create the stable foundation for the subsequent construction work. This leaves no room for compromises. That's why BOMAG single drum rollers consistently transform site requirements into high-quality technology.*

- **Economical:** lowest costs per cubic metre BOMAG single drum rollers show just how efficient soil compaction can be.
- **Powerful:** maximum compaction with high linear loads and amplitudes
- **Stable value:** quality without compromise – a BOMAG gives you long-lasting pleasure
- **Intuitive:** operation and easy servicing
- **Robust:** proven engine technology, sturdy hoods, high-quality components
- **Reliable:** in both extreme heat and cold – made possible by the BOMAG cooling system and many other features
- **Innovative:** ECONOMIZER and TERRAMETER show the compaction progress. The fast and intuitive connection to BOMAP makes Surface Covering Dynamic Compaction Control (SCDCC) easier than ever before.
- **Flexible:** the widest range of options and thus optimally equipped for all requirements

The rugged design of the new Smart Line single drum rollers makes them ideally suited for any application.





# DRUM AND FRAME: THE RIGHT MACHINE FOR EVERY JOB.

*The demands on the drum are as varied as the construction sites. BOMAG has the right solution for every requirement.*

The D-series models are suitable for compacting non-cohesive soils (sand, gravel, rubble), weakly cohesive soils and hydraulically bound materials. The standard scraper ensures clean work.

PD models with padfoot drum are suitable for compacting cohesive soils. The ingenious shape of the pad feet penetrates deep into the soil for powerful kneading. The raised front frame creates generous clearance between the drum and frame preventing material clogging. The scraper teeth are made of wear-resistant manganese steel and can be replaced separately.

With segmented casing, the smooth drums can easily be converted into padfoot drums. This greatly expands the range of applications. The three-part design guarantees optimal adaptation and easy assembly. The segments can be mounted very quickly without having to dismantle the frame.



Quick changeover from smooth drum to padfoot drum for flexible working.

## ADVANTAGES AT A GLANCE:

- Contact scrapers (optional)
- Raised front frame to prevent material accumulation
- Individually replaceable scraper teeth
- Padfoot segmented casing in three parts for optimum adaptation
- Segmented casing can be mounted without dismantling the frame



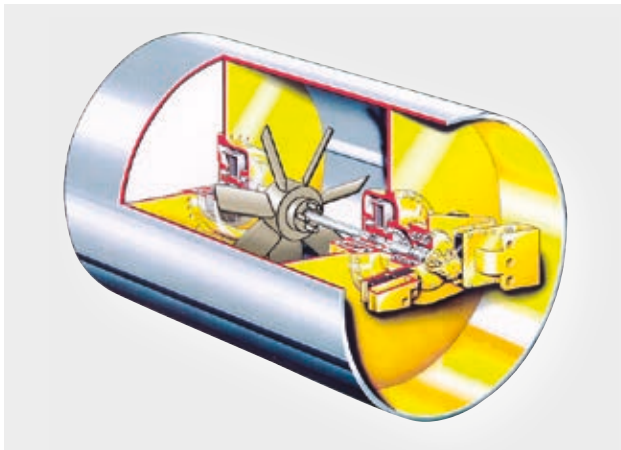
The Smart Line series is available with a smooth drum or padfoot drum.



# THE VIBRATION SYSTEM: A STRONG HEART.

*Vibration is at the heart of the roller – with BOMAG single drum rollers, it beats particularly strongly.*

BOMAG Smart Line single drum rollers offer two amplitudes and two frequencies. High amplitudes of up to 1.9 mm and precise coordination of the parameters centrifugal force, vibrating mass and imposed load enable optimum depth effect and compaction power. One result of the experience gained from many years of technology leadership. Needless to say, BOMAG exciters are extremely durable and low-maintenance. Their integrated fan cooling maximises service life.



Power and endurance: high-amplitude vibration, encapsulated bearings and internal cooling.

The Smart Line series includes single drum rollers with operating weights from 10 to 18 t. There is an ideal model for virtually every application. Some machines can be optionally equipped with higher centrifugal forces, allowing powerful amplitudes of up to 2.2 mm. That means 25% more depth effect.

BOMAG also offers a wide range of options. This ensures that the right machine is available for every application and construction site.

## ADVANTAGES AT A GLANCE:

- Circular exciter with high compaction force
- Up to 2.2 mm amplitude for maximum depth effect
- Two amplitudes and frequencies
- Optimum vibration rating
- Long service life due to fan cooling
- Uniform compaction results thanks to two exciter units

Not just impressive in theory: its powerful vibration system speeds up successful completion of the construction task.



# SIMPLE AND CLEAR: THE WORKPLACE.

The operation of the Smart Line single drum rollers is straightforward: clearly marked, robust switches, easy-to-read colour display. Even inexperienced operators can climb onto the machine and start working immediately.



The Smart Line series offers a wide selection of add-ons for the driver's cab. The options range from simple railings and a sturdy canopy to a ROPS/FOPS roof. Even more comfort is provided by the cab, which can also be equipped with air conditioning. A vibration-insulated operator's platform for fatigue-free working comes as standard on all models.

The Smart Line also excels when it comes to safety. The excellent all-round visibility ensures safe working on any construction site. The raised front frame makes it even easier to gauge the machine's dimensions in tight conditions. In addition, the seat contact switch ensures the machine stops automatically as soon as the driver leaves the seat while the machine is in operation. For optimum job site illumination, all single drum rollers with a canopy, ROPS/FOPS and cabin are also equipped with worklights as standard.

## ADVANTAGES AT A GLANCE:

- Simple operation
- Vibration-insulated driver's cab
- Excellent all-round visibility
- Raised front frame
- Greater safety thanks to seat contact switch



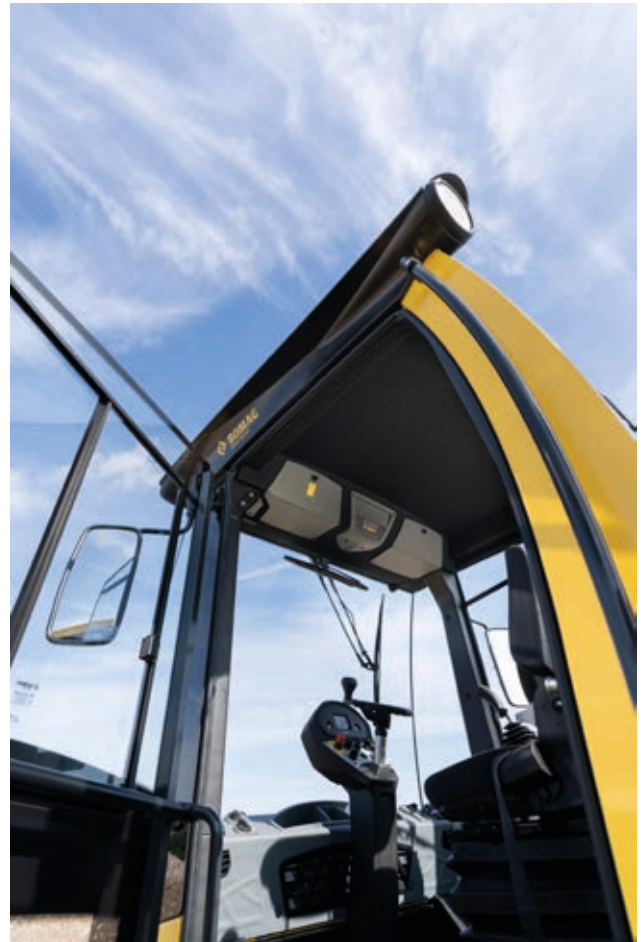


# COMFORTABLE AND SAFE WORKING.

Cabs with heating or a heating/air conditioning unit ensure maximum comfort on the construction site in all weather conditions. A wide range of seat adjustment options and generous legroom allow comfortable seating positions throughout the workday. The optional high-comfort seat provides additional ergonomic support. The sliding windows fitted as standard make it easy to adjust the mirrors. Storage compartments and the cup holder provide storage within easy reach of the operator. Rear windscreen heating and wipers ensure the best visibility all year round.

## ADVANTAGES AT A GLANCE:

- Working lights
- Optional high-comfort seat
- Generous legroom
- Numerous storage options
- Sliding window



# MEASURING TECHNOLOGY: MEETING TARGETS RELIABLY.

*With BOMAG measuring technology, you can already monitor compaction during rolling operations. Surface coverage with precision.*

## ECONOMIZER

BOMAG makes the compaction process measurable and visual. The ECONOMIZER shows the degree of compaction on a display, enabling the operator to achieve the best compaction results. Very simple operation because no set-up or calibration is required.

The ECONOMIZER automatically determines the compaction progress. An illuminated strip indicates completion of the compaction work to the operator in order to avoid over-compaction. A light warns of over-compaction in good time.

## TERRAMETER

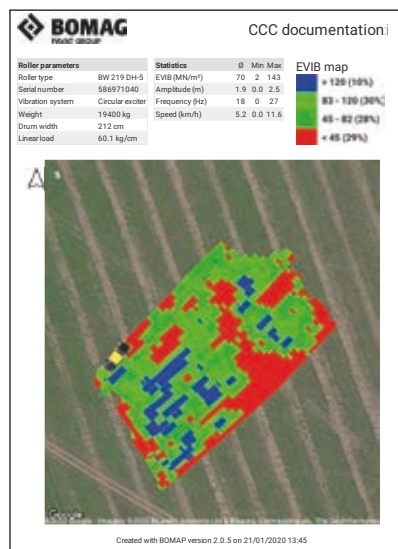
In earthwork, the stiffness of the material, measured with a load plate, is often used as a criterion. However, load plates only measure specific points and are laborious. TERRAMETER has the technology to do far more. This measuring system turns BOMAG single drum rollers into rolling load plates: surface covering, in real time.



## BOMAP

Compaction performance: digital, transparent and in real time.

BOMAP allows you to document the results of your soil compaction work on the construction site in real time. Intuitively operable, it documents the passes on all makes of rollers. This produces optimal results with maximum efficiency and substantial savings.



Documentation made easy.



For immediate use anywhere: BOMAP.

## ADVANTAGES AT A GLANCE:

- EVIB value in MN/m<sup>2</sup> for surface covering monitoring
- No unnecessary passes
- Maximum measuring accuracy due to two transducers
- High measuring density for continuous weak spot analysis
- Easy connection to BOMAP via JOBLINK
- BOMAP: real-time display of the number of passes or compaction values
- Accuracy via optional GPS antenna
- Retrofitting and upgrading possible at any time



# THE DRIVE SYSTEM: FULL POWER – AT ALL TIMES.

*The powertrain on BOMAG single drum rollers is consistently geared to performance and durability. With their sophisticated cooling concept, the proven, fuel-efficient TIER2 and TIER3 engines ensure reliable operation on the construction site even under extreme environmental conditions.*



Dust and heat: no problem for BOMAG single drum rollers.



Optimal traction on any surface: +/-12° pendulum angle.

Cooling is crucial. BOMAG's cooling system offers concrete benefits: cooling air is drawn in where it is cleanest and coolest – above and in front of the engine. This means Smart Line single drum rollers can also be used in extreme temperatures without any problems! It also keeps the radiators clean at all times. Exhaust air is directed away from the machine, so there is no dust pollution.

The engine is protected by two-stage fuel filtration and an electrically monitored water separator. The air filtration takes place in three-stages: cyclone as pre-separator plus two filter elements.

The drum drive and self-locking differential gear of the rear axle are standard equipment. Even if one wheel loses ground contact, the other still has forward drive. Manual Slip Control allows the operator to control the torque be-

tween the drum and axis to move forward even in difficult conditions. The powerful drive and well-designed front and rear frame enable the machine to negotiate gradients of up to 45%. The BOMAG single drum roller features outstanding manoeuvrability thanks to its 35° steering angle.

## ADVANTAGES AT A GLANCE:

- Robust engines for maximum reliability
- Trouble-free operation in extreme temperatures
- Optimised airflow keeps the radiator clean
- Multi-stage fuel and air filtration
- Self-locking differential
- Manual Slip Control for high traction
- Outstanding manoeuvrability with 35° steering angle
- Optimal traction due to 12° pendulum angle

# EASY SERVICING: LESS IS MORE.

*Less need for maintenance means less downtime, lower risk and lower costs. BOMAG has made this claim a reality. The result: BOMAG Easy Service.*

Lubrication nipples? None! All bearing points are filled with high-performance lubricants for the entire service life and hermetically sealed. Dirt can't get in, and lubricant can't escape. This maximises service life.

The hood can be fully opened conveniently by hand, allowing free access to the engine compartment. The impact-resistant material protects the components from damage and vandalism. Drain cocks for all liquids are mounted on the outside of the frame. The rubber buffers on the drum can be replaced individually without dismantling frame parts.

A diagnostic interface also allows error codes to be evaluated. Current error codes are shown on the display as well, enabling fast and targeted service.

## ADVANTAGES AT A GLANCE:

- No lubrication nipples
- Diagnostic interface and error code display
- Hood can be opened manually
- All maintenance points accessible from the ground
- Drain cocks for all liquids on the frame
- All components protected against vandalism
- Individually exchangeable rubber buffers
- Bolted instead of welded front frame for quick repairs



Diagnostic interface with error code shown on the display.



All service points are accessible from the ground, and the hood can be opened manually.



# THE OPTIONS: YOU CHOOSE.

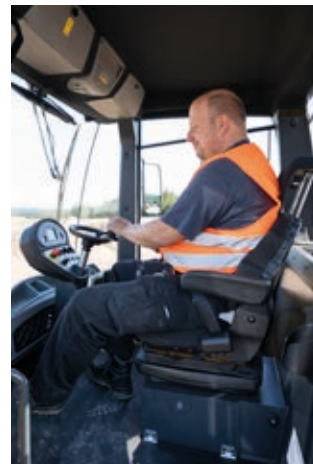
BOMAG has the solution for all requirements. A wide range of models from BW 211 to BW 218 always ensures the right solution. Numerous options allow the single drum rollers to be individually equipped.

## HERE IS A SELECTION:

- Canopy
- ROPS/FOPS
- ROPS/FOPS cab
- High-comfort seat
- Air conditioning
- Road traffic lights
- ECONOMIZER and TERRAMETER compaction displays
- Increased amplitudes
- Padfoot shell
- Polyurethane or sheet metal contact scrapers
- JOBLINK
- BOMAP Connect
- GPS antenna and bracket
- Tractor-tread tyres
- Special paint finishes
- Flashing beacon
- Telematics and much more.



Choose from diamond-tread or tractor-tread tyres.



High-comfort seat.



GPS antenna.



ROPS/FOPS and canopy.



ROPS/ FOPS cab.

# MODEL OVERVIEW.



**BW 211 D-5 SL**

**BW 212 D-5 SL**

**BW 213 D-5 SL**

**BW 215 D-5 SL**

**BW 216 D-5 SL**

**BW 218 D-5 SL**

MODEL TYPE	OPERATING WEIGHT* [T]	WORKING WIDTH [MM]	ENGINE OUTPUT [KW]	EXHAUST CLASSIFICATION
BW 211 D-5 SL	10.6	2130	98	Stage II / TIER2
BW 212 D-5 SL	11.5	2130	98	Stage II / TIER2
BW 213 D-5 SL	12.3	2130	98	Stage II / TIER2
BW 213 D-5 SL	12.5	2130	103	Stage III / TIER3
BW 215 D-5 SL	14.7	2130	103	Stage III / TIER3
BW 216 D-5 SL	15.4	2130	119	Stage III / TIER3
BW 218 D-5 SL	17.4	2130	119	Stage III / TIER3
BW 211 D-5 SL	10.6	2130	100	Stage V / TIER4f
BW 213 D-5 SL	12.5	2130	100	Stage V / TIER4f

\*with ROPS/FOPS cab

Technical modifications reserved. Machines may be shown with optional accessories.





**BW 211 PD-5 SL**

**BW 212 PD-5 SL**

**BW 213 PD-5 SL**

**BW 216 PD-5 SL**

<b>MODEL TYPE</b>	<b>OPERATING WEIGHT* [T]</b>	<b>WORKING WIDTH [MM]</b>	<b>ENGINE OUTPUT [KW]</b>	<b>EXHAUST CLASSIFICATION</b>
<b>BW 211 PD-5 SL</b>	12.2	2130	98	Stage II / TIER2
<b>BW 212 PD-5 SL</b>	13.0	2130	98	Stage II / TIER2
<b>BW 213 PD-5 SL</b>	13.2	2130	103	Stage III / TIER3
<b>BW 216 PD-5 SL</b>	16.0	2130	119	Stage III / TIER3

\*with ROPS/FOPS cab

Technical modifications reserved. Machines may be shown with optional accessories.



BW218DIII

**BOMAG**  
TAMM GROUP



# PERFECTION DOESN'T HAPPEN BY CHANCE!

With a single drum roller from BOMAG, machine operators and contractors benefit from innovative and sophisticated BOMAG technology and the experience gained from over 60 years of soil compaction development work. Every BOMAG roller embodies our entire expertise. So you can put all your experience into your work.



Head Office:

**BOMAG**  
Hellerwald  
56154 Boppard  
GERMANY  
Tel. +49 6742 100-0  
info@bomag.com

**BOMAG Maschinen-  
handels-gesellschaft m.b.H.**

Klausenweg 654  
2534 Alland  
AUSTRIA  
Tel. +43 2258 20202  
austria@bomag.com

**BOMAG MARINI EQUIPAMENTOS LTDA.**

Avenida Clemente Cifali, 530  
Distrito Industrial Ritter  
Cachoeirinha – RS  
BRAZIL  
ZIP code 94935-225  
Tel. +55 51 2125-6642  
brasil@bomag.com

**BOMAG (CANADA), INC.**

2233 Argentia Road, East Tower  
Suites 302  
L5N 2X7 Mississauga, ON  
CANADA  
Tel. +1 800 782 6624  
canada@bomag.com

**BOMAG (CHANGZHOU)**

Construction Machinery Co., Ltd.  
No. 66 Bopa Road  
Xuejia Town  
Xinbei District  
Changzhou 213125  
CHINA  
Tel: +86 519 88585566  
china@bomag.com

**BOMAG India Pvt Ltd**

Unit No. 614, B Wing, 6th Floor  
Kanakia Wall Street  
Chakala Andheri Kurla Road Andheri East  
Mumbai 400 093 Maharashtra  
INDIA  
Tel.: +91 8657492418  
india@bomag.com

**BOMAG France S.A.S.**

2, Avenue du Général de Gaulle  
91170 Viry-Châtillon  
FRANCE  
Tel. +33 1 69578600  
france@bomag.com

**BOMAG (GREAT BRITAIN), LTD.**

Sheldon Way  
Larkfield, Aylesford  
Kent ME20 6SE  
GREAT BRITAIN  
Tel. +44 1622 716611  
gb@bomag.com

**BOMAG Italia**

Via Roma 50  
48011 Alfonsine  
ITALY  
Tel. +39 0544 864235  
italy@bomag.com

**FAYAT BOMAG Polska Sp. z o.o.**

Ul. Szyszkowa 52  
02-285 Warszawa  
POLAND  
Tel. +48 22 482 04 00  
poland@bomag.com

**FAYAT BOMAG RUS OOO**

141400, RF, Moscow region  
Khimki, Klayazma block, h. 1-g  
RUSSIA  
Tel. +7 (495) 287 92 90  
russia@bomag.com

**BOMAG GmbH**

300 Beach Road  
The Concourse, #18-06  
Singapore 199555  
SINGAPORE  
Tel. +65 6 294 1277  
singapore@bomag.com

**BOMAG Americas, Inc.**

125 Blue Granite Parkway  
Ridgeway SC 29130  
U.S.A.  
Tel. +1 803 3370700  
usa@bomag.com

